

HP95C

Testpoint {
o Vag
o P2
o P1

LHS
↑

o Vbat
o Vbut
o Vcc
o Vcc
o Vcc
o Vcharge
o ManSw
o NormSw
o SpSw

o R1Sw
o SwCam
o Sh.
o Sg
o SF
o Se
o Sd
o Sc
o Sb
o Sa
o Gnd
o Gnd
o Rcd
o Str
o Kc4
o Kc3
o Kc2
o Kc1

Logic → Keyboard / Display
Pins

o Vcc
o Vcc
o Gnd
o Gnd
o Fwd
o Rev
o Brk
o R7
o R6
o R5
o R4
o R3
o R2
o R1
o VM
o Vss
o PrtStb
o LC1
o LC2
o HomeSw
o OOPS

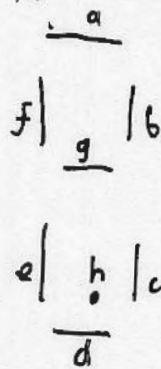
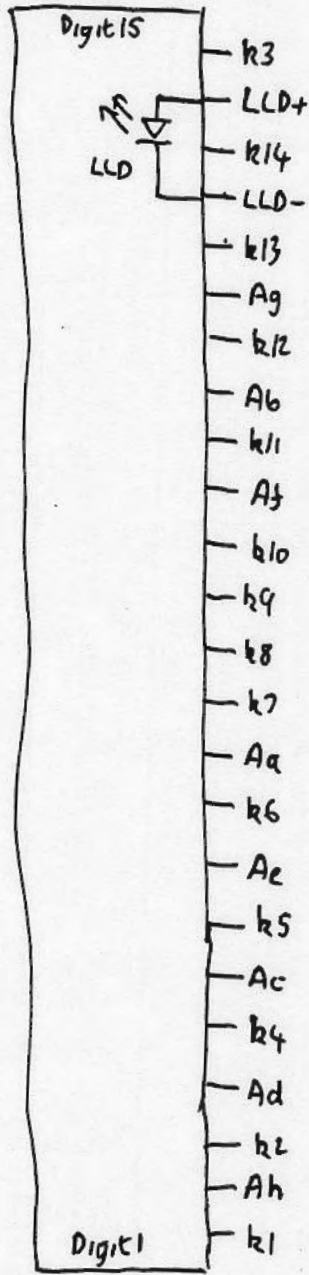
Logic → Printer Pins

o Sync
o F2
o ISA (Mem)
o Data
o ISA (ACT)

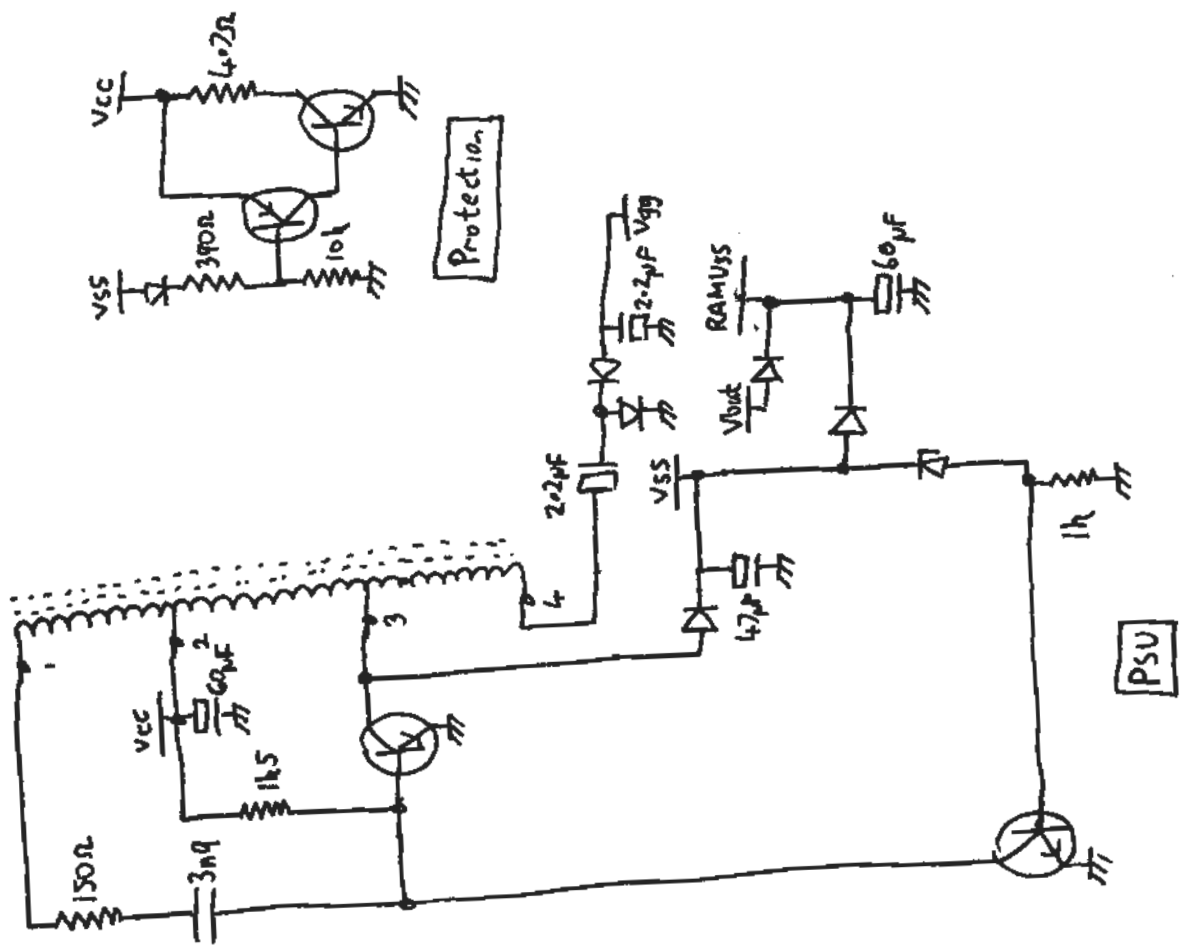
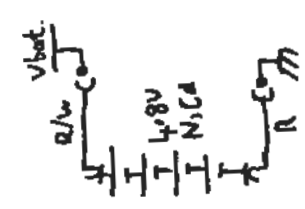
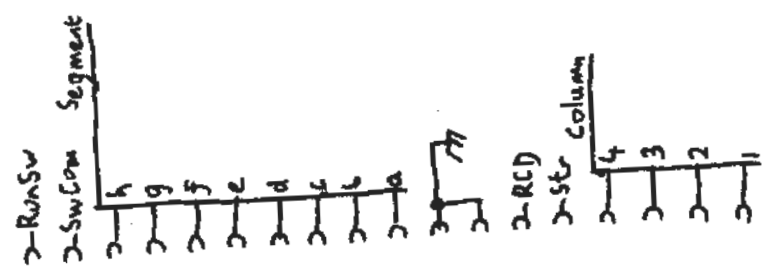
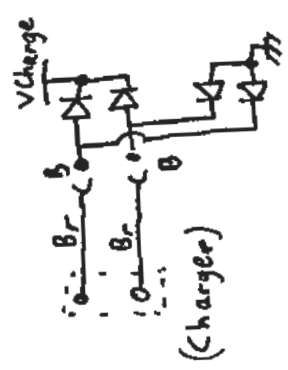
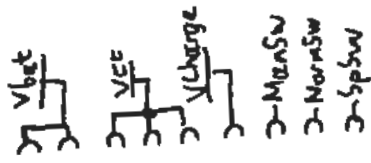
Testpoints

Topcat Display

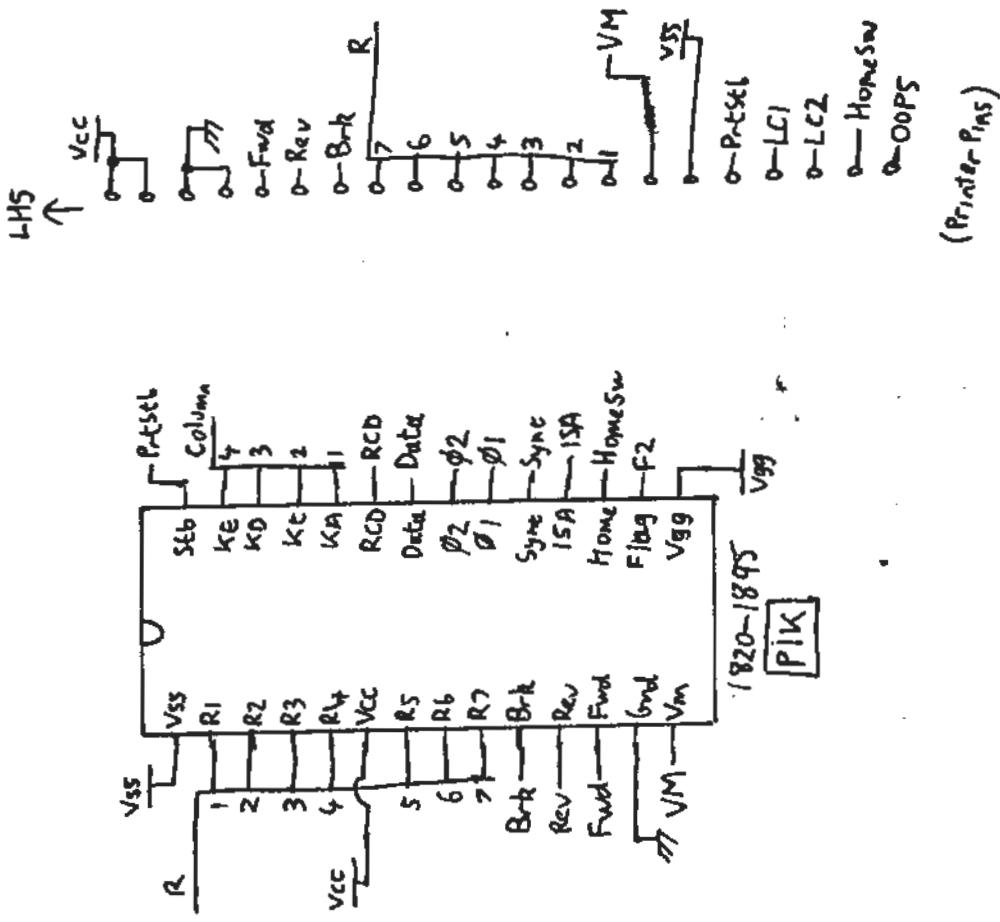
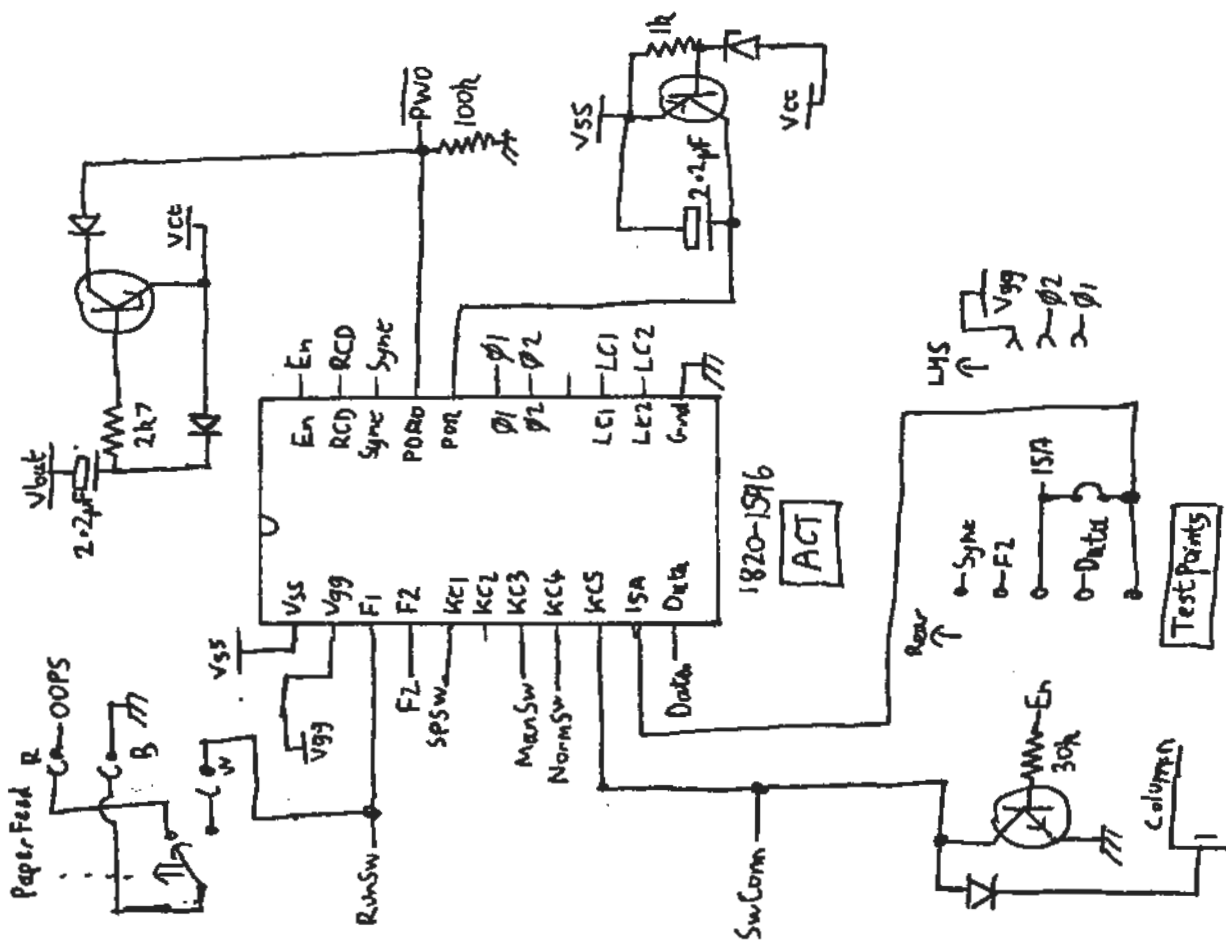
LHS
↑

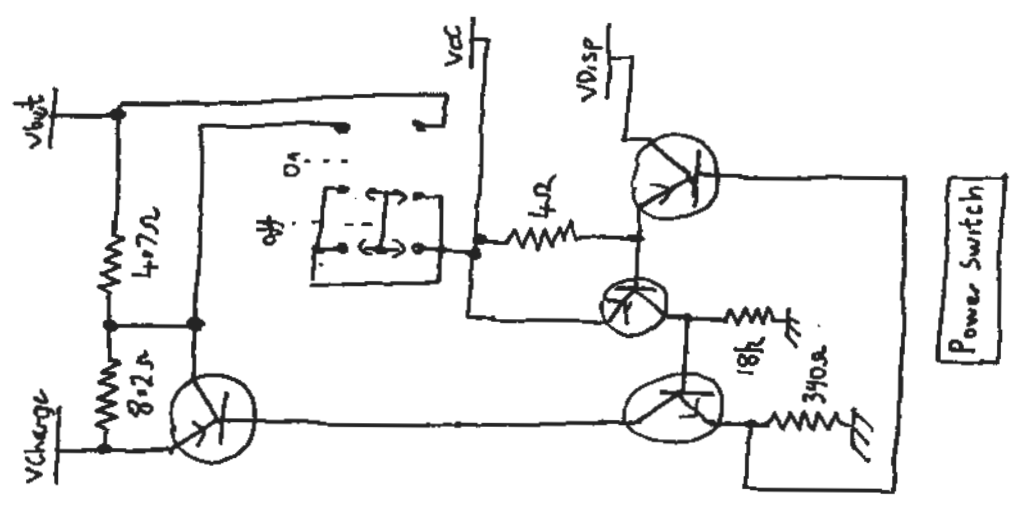
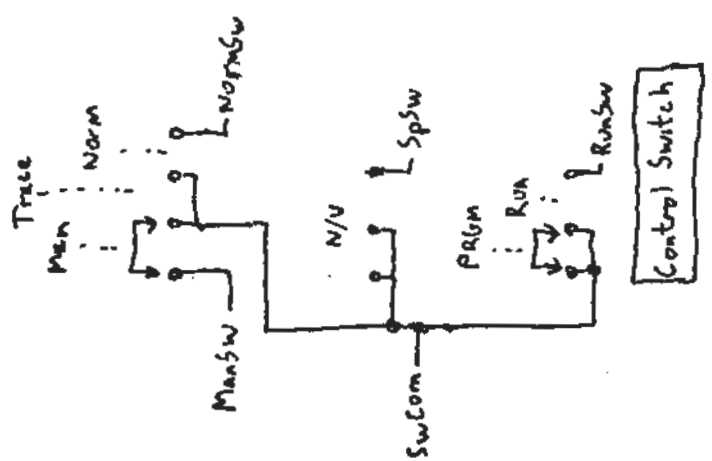
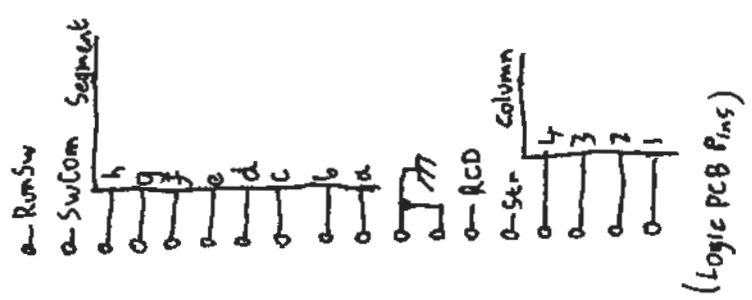
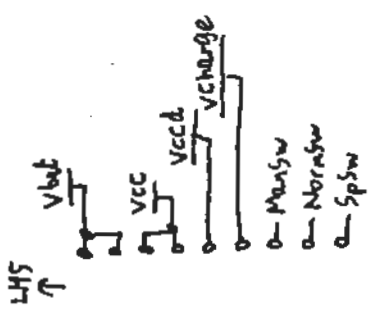


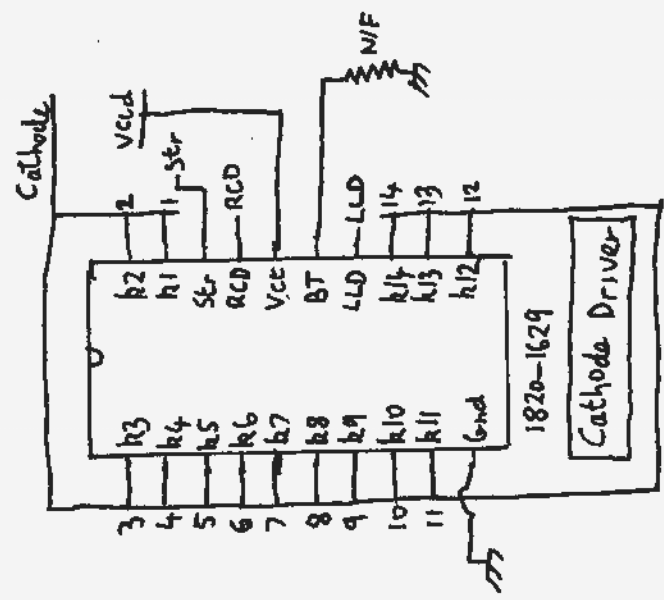
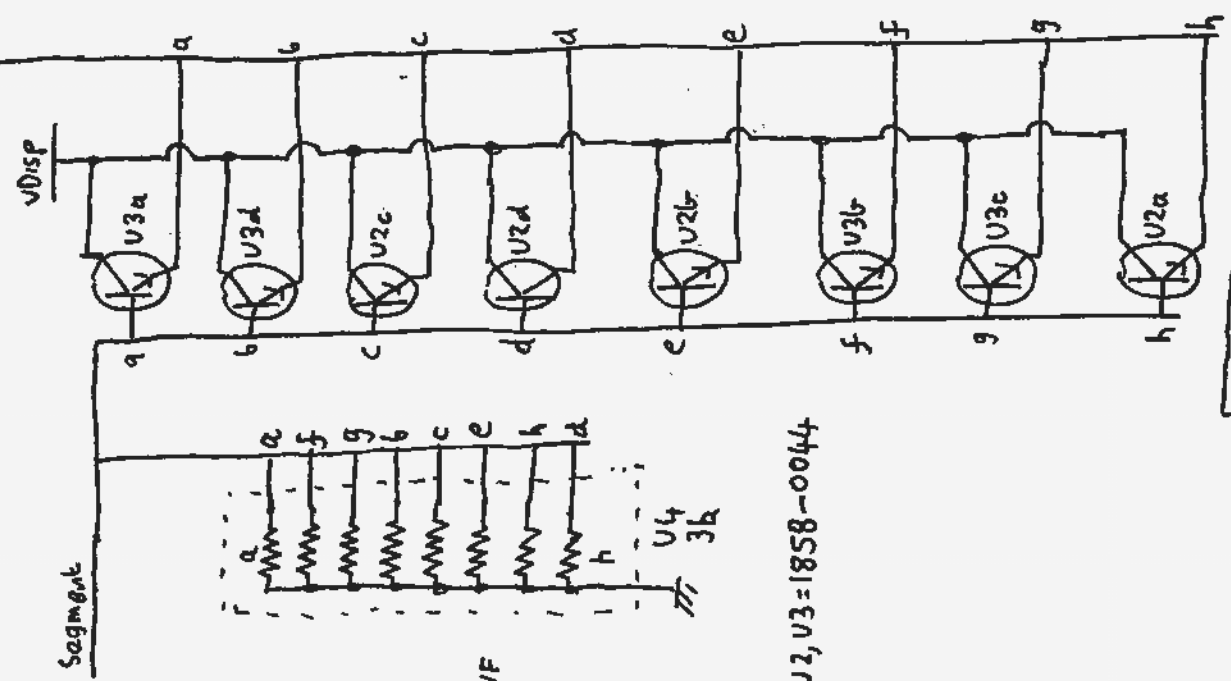
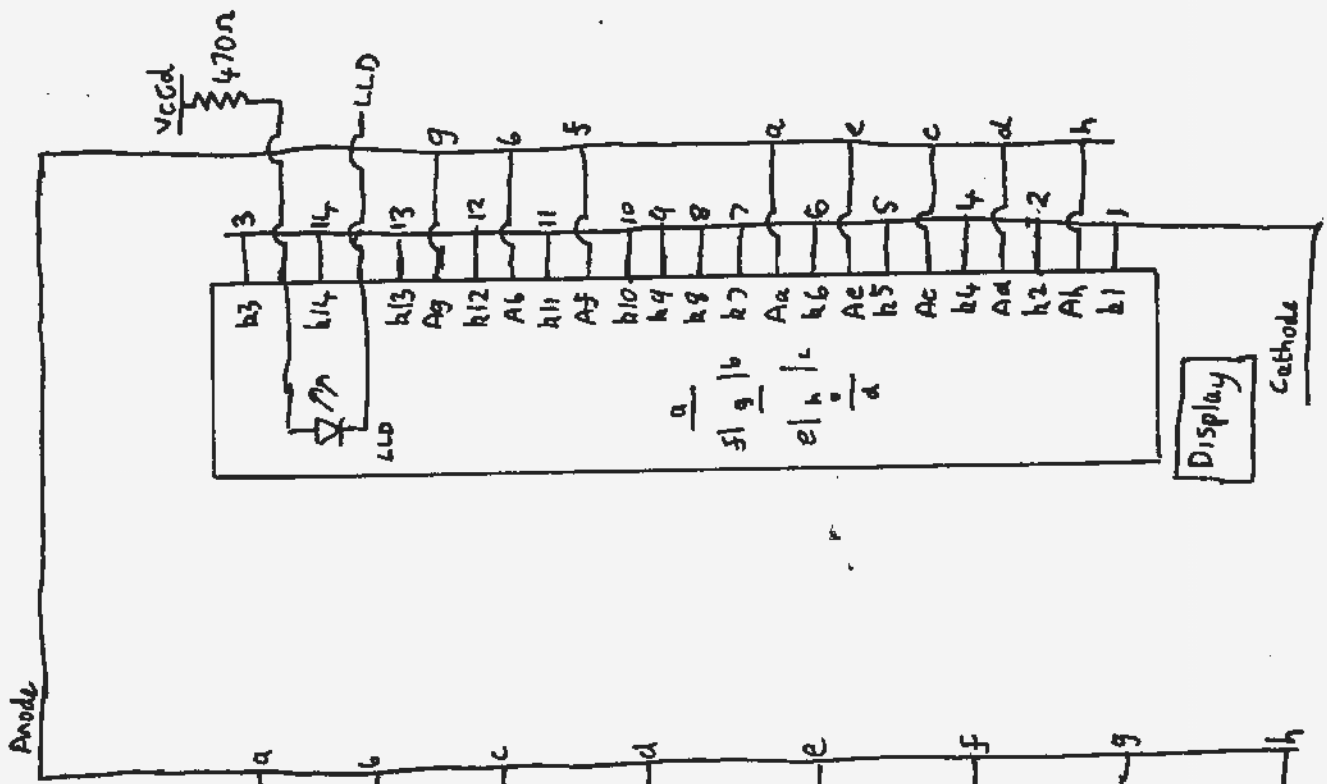
Note: k3 has only g segment
Digit 15 has only g segment,
mapped as k3/e.



(Keyboard/Display socket)
 HP95C Logic PCB sheet ① 00095-60002

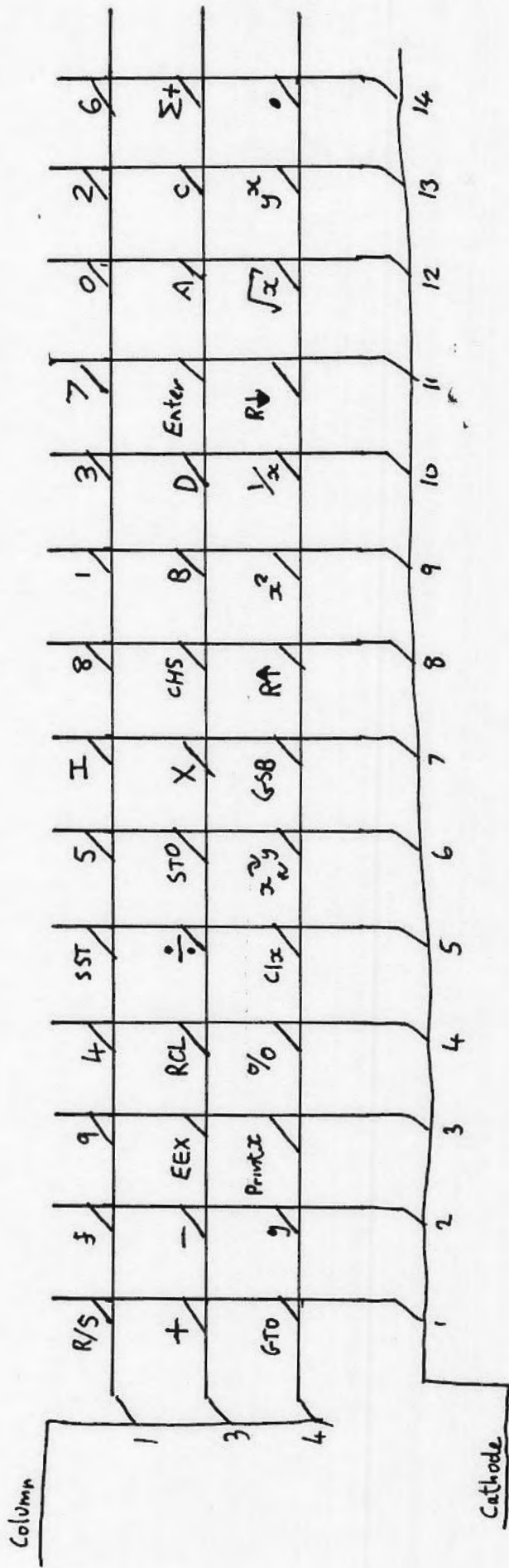




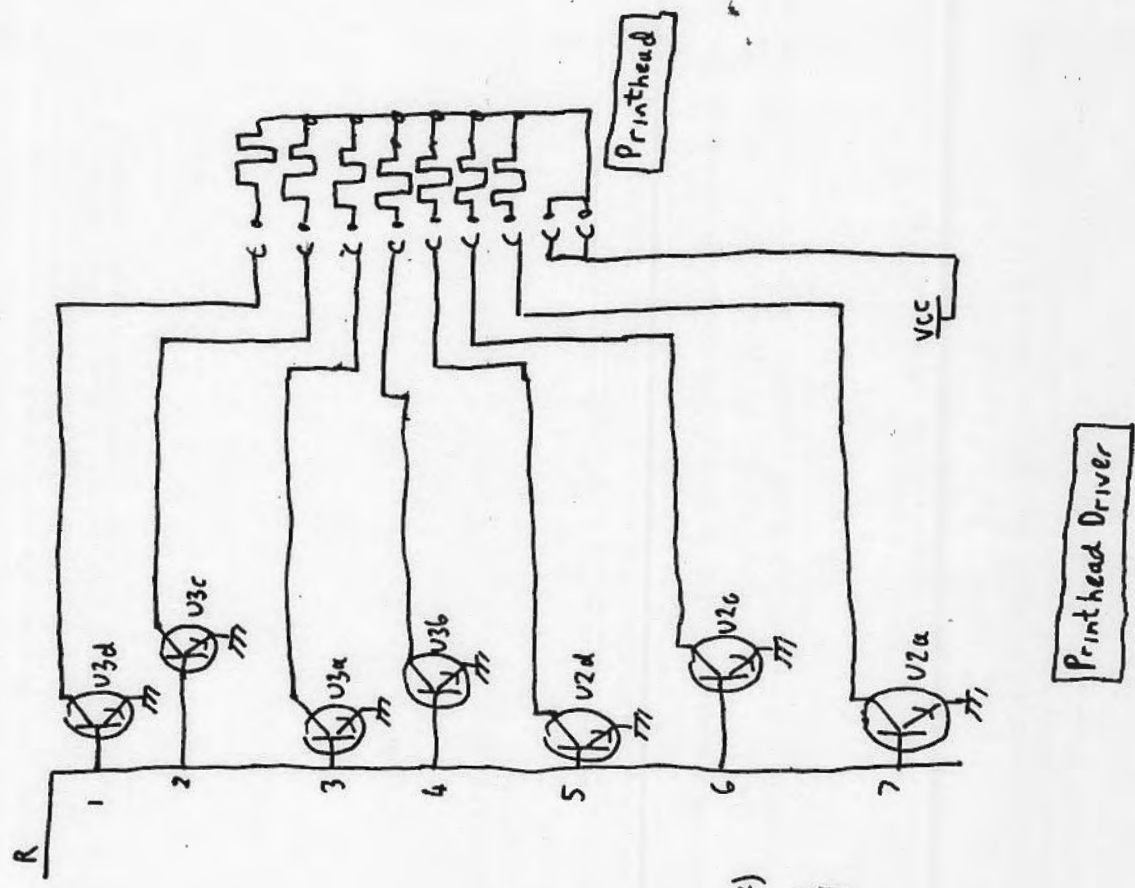
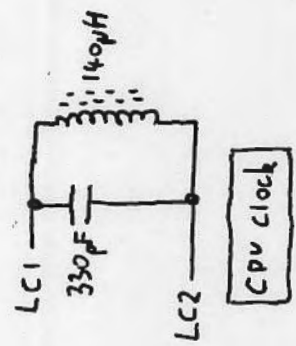
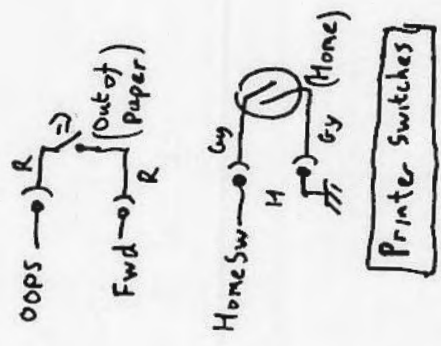
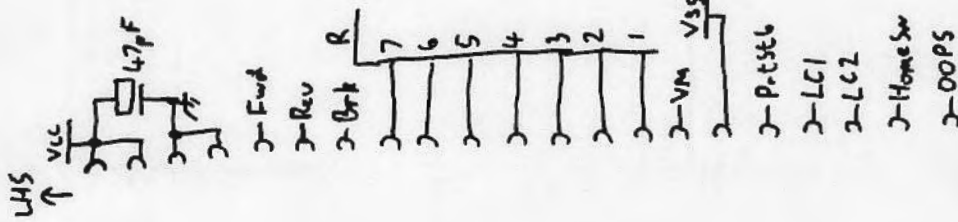


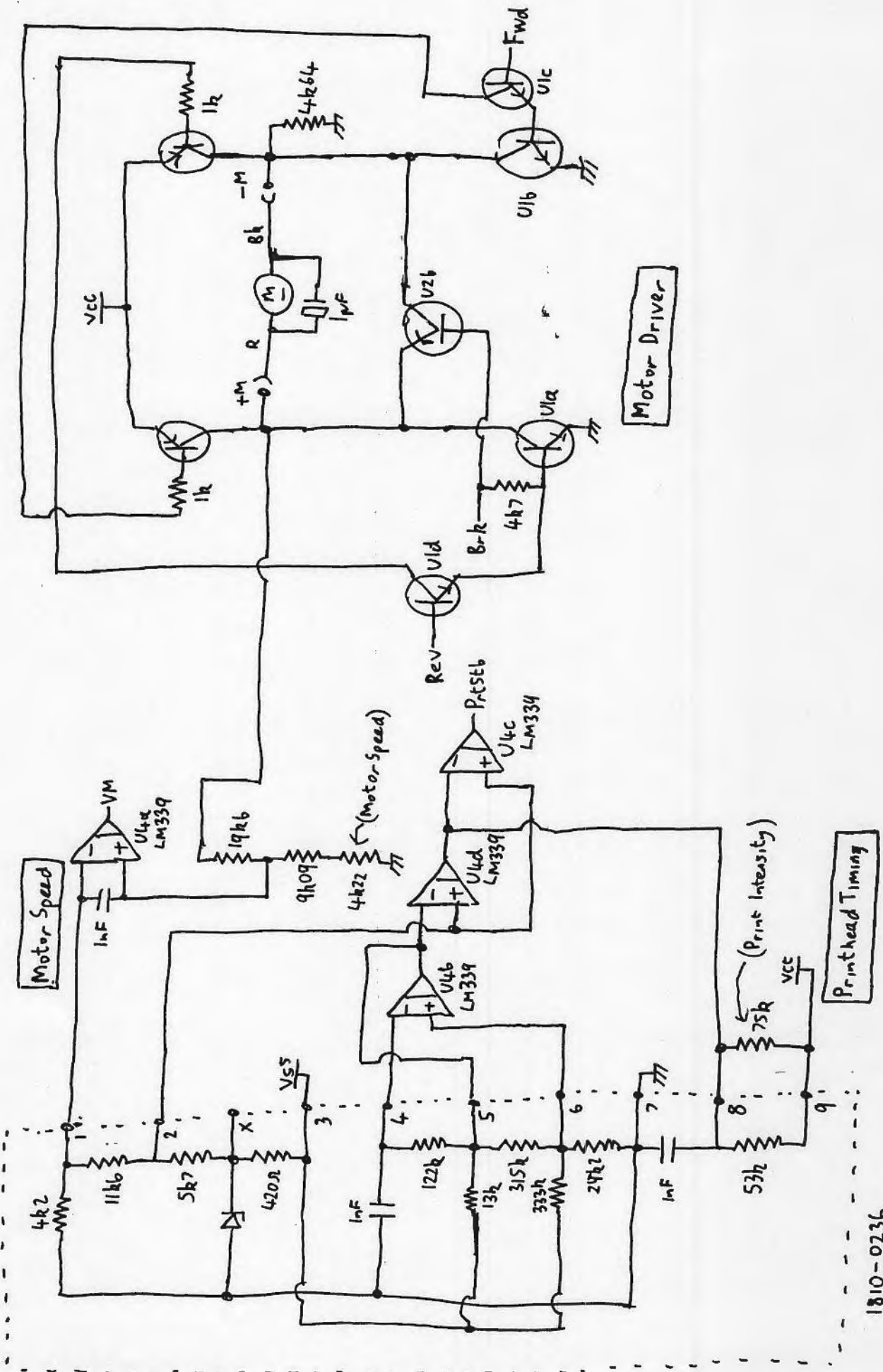
U2, U3 = 1858-0044

Anode Driver

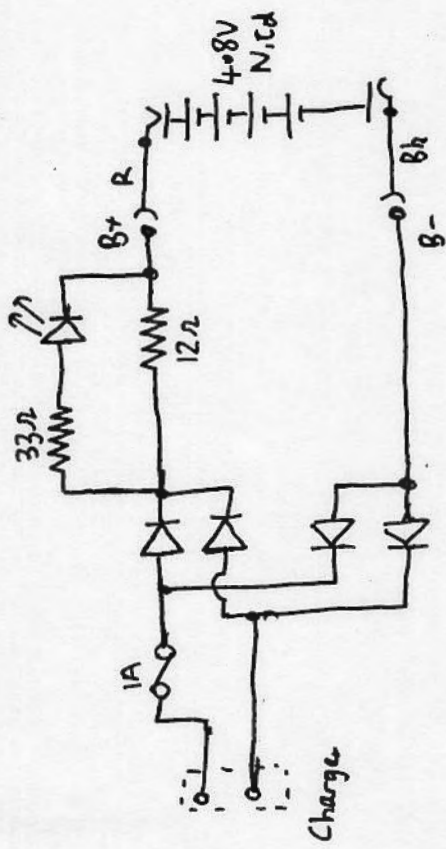


Keyboard





1810-0236



HP82037 Topcat Reserve Power Pack

82037-60001