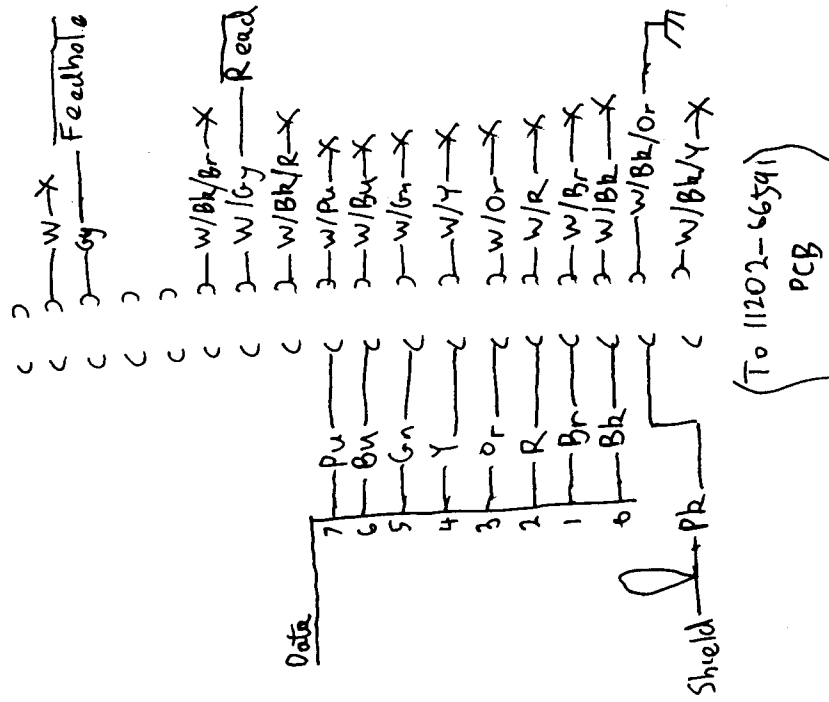
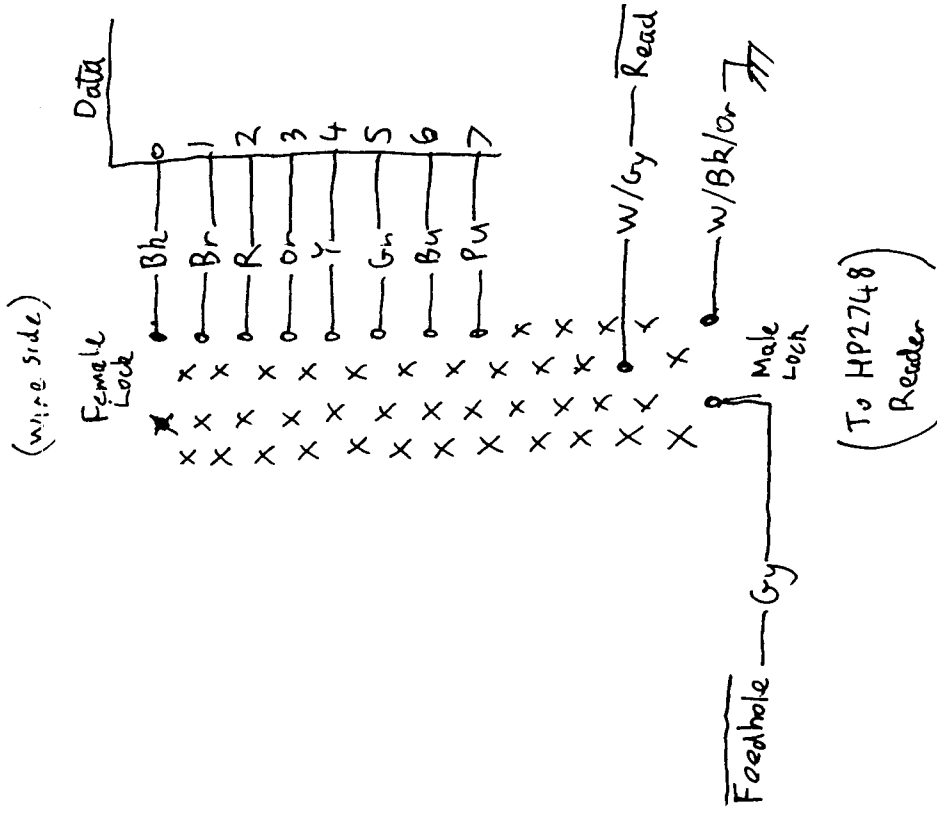


(To 11202-66591)
PCB



Note: —X = wire not used at PTR end.

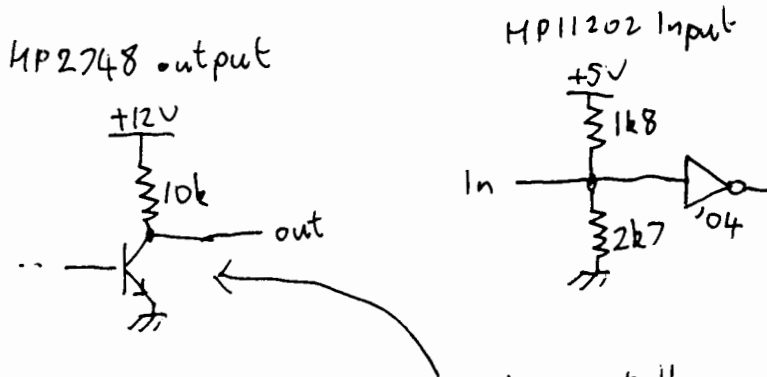
Standard wiring + colours at 11202 PCB Connector

HP11202 Option A01 Note

HP11202 has TTL inputs

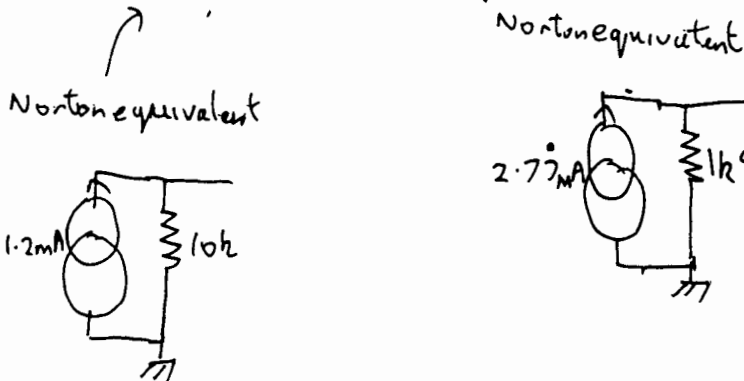
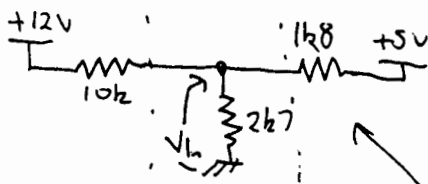
HP2748 has 12V outputs, but with 10k pullup only.

When connected, high level signal is $< 5V$ since:



when high, this transistor is cutoff, so can be ignored. Also ignore TTL input current.

so, circuit simplifies to:



so circuit simplifies to:

