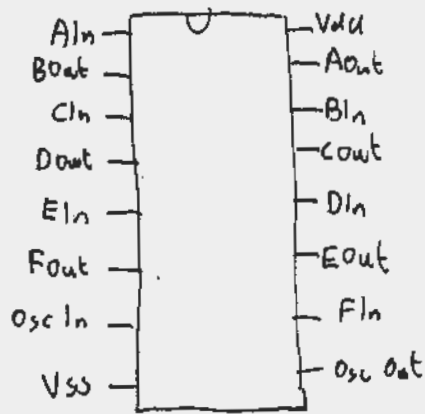
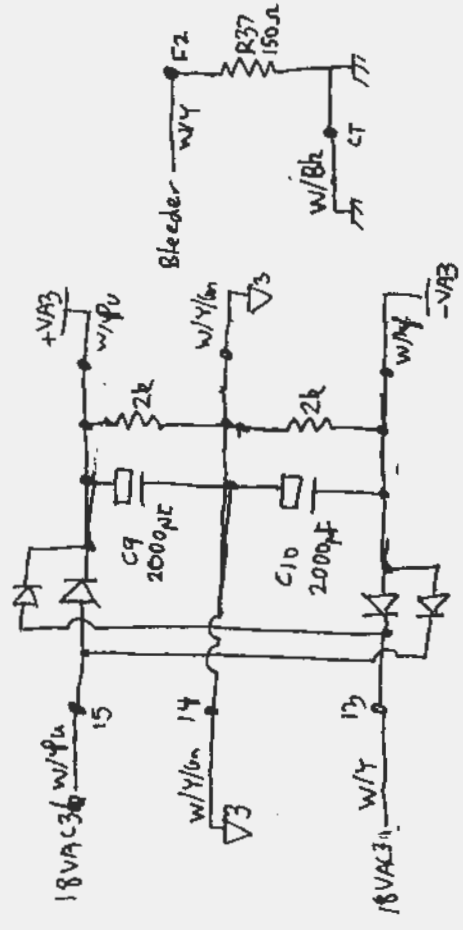
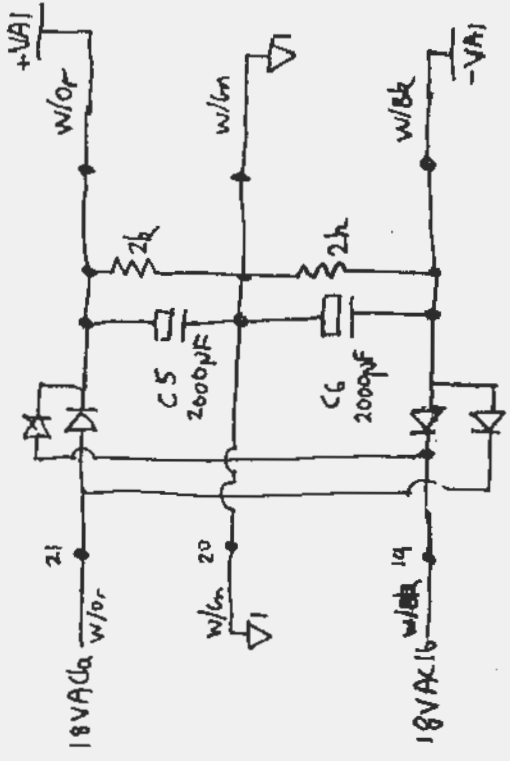


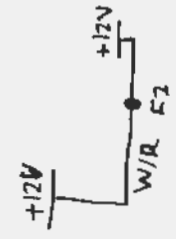
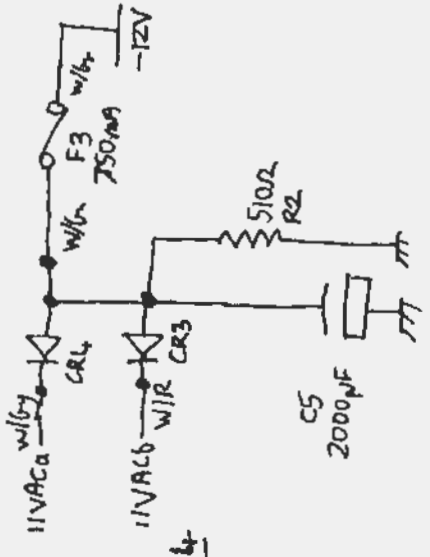
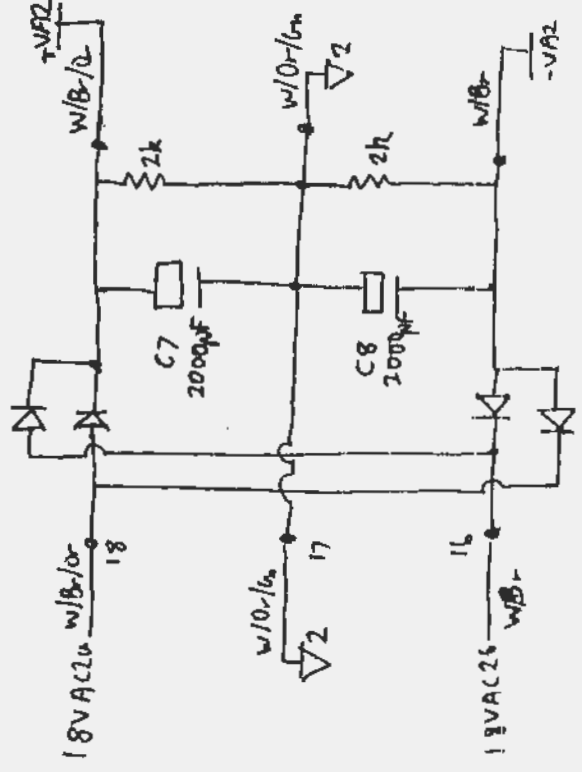
HP6940

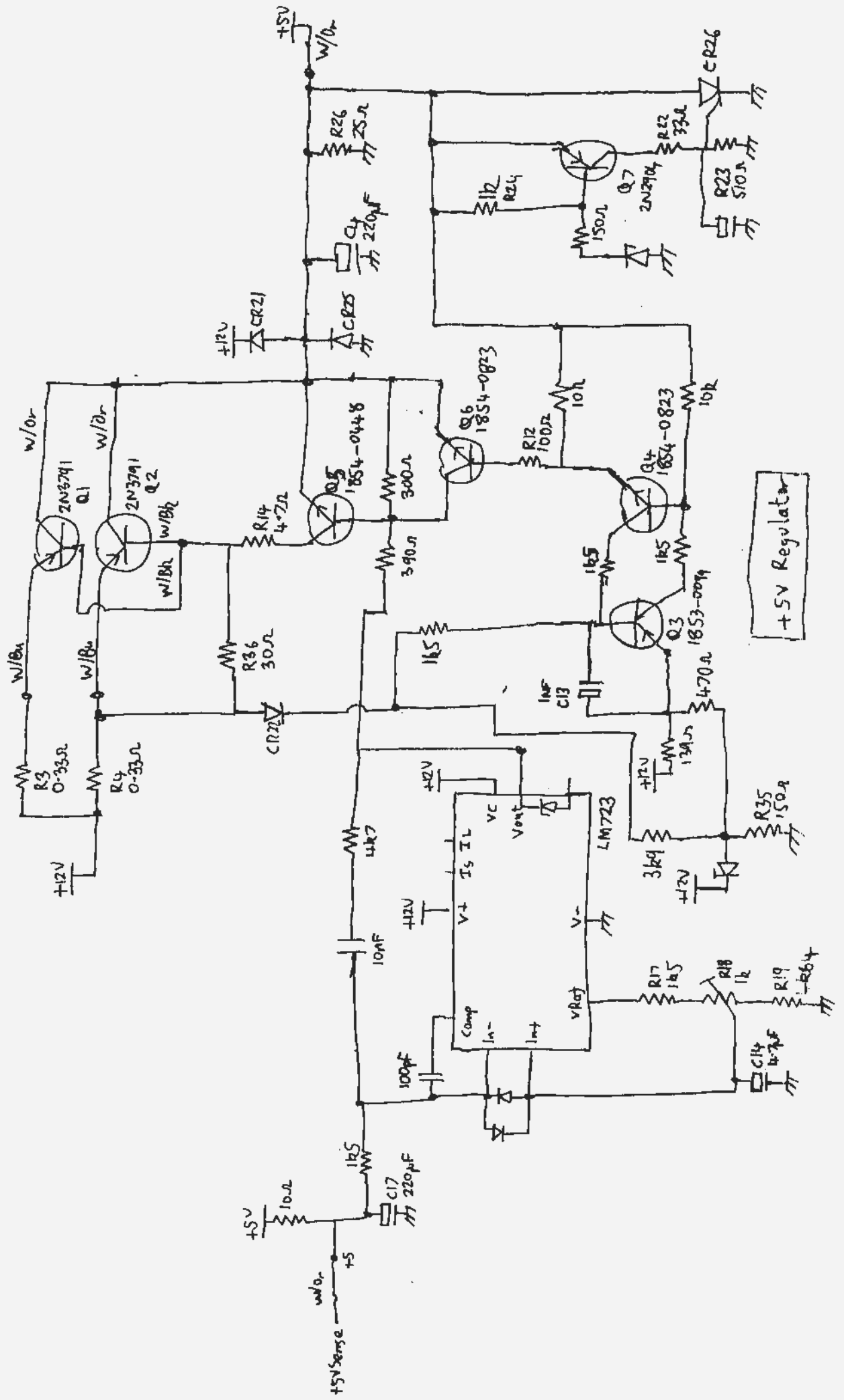


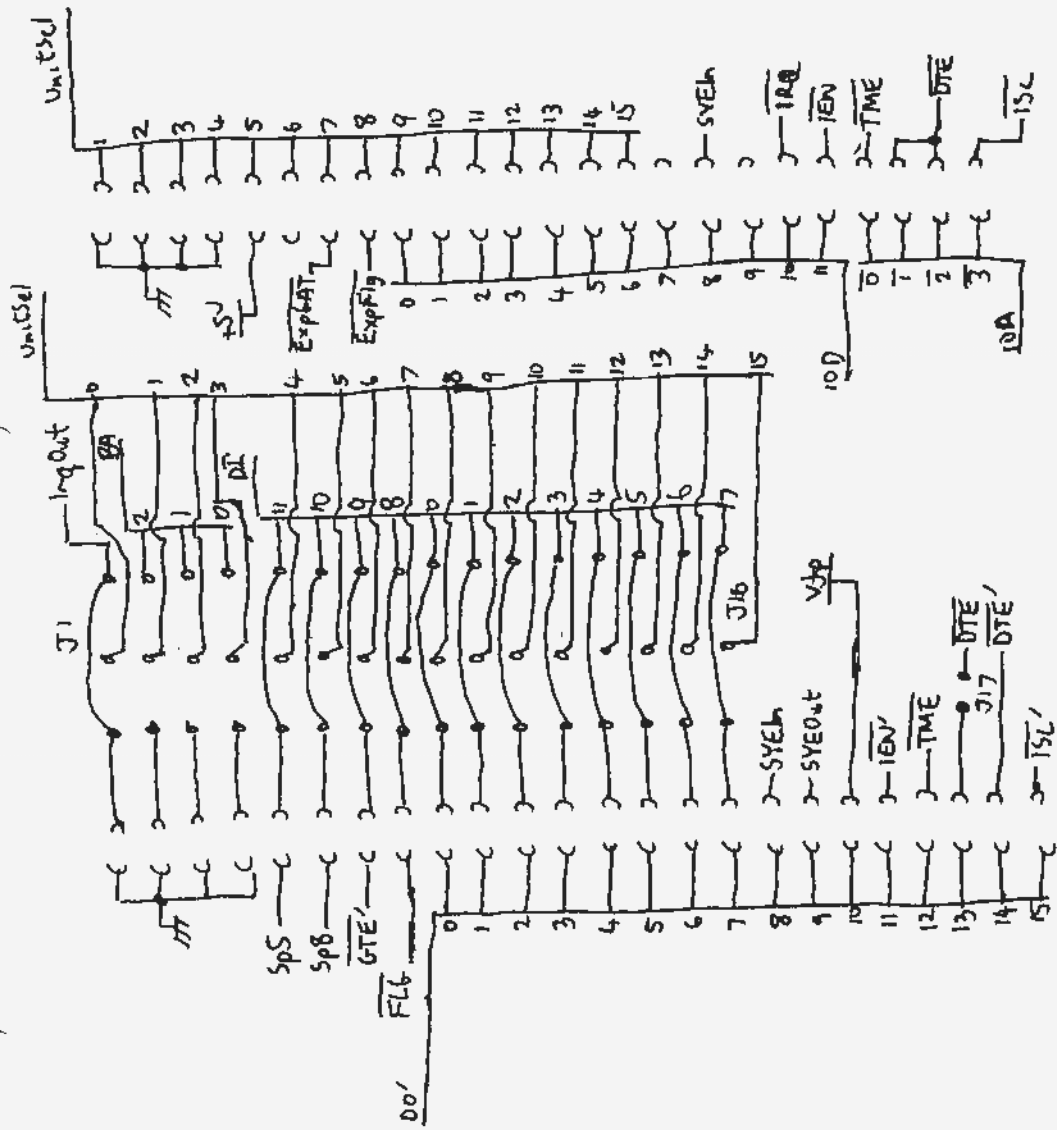
14490
Hex Contact Bounce Eliminator



Unregulated Supplies



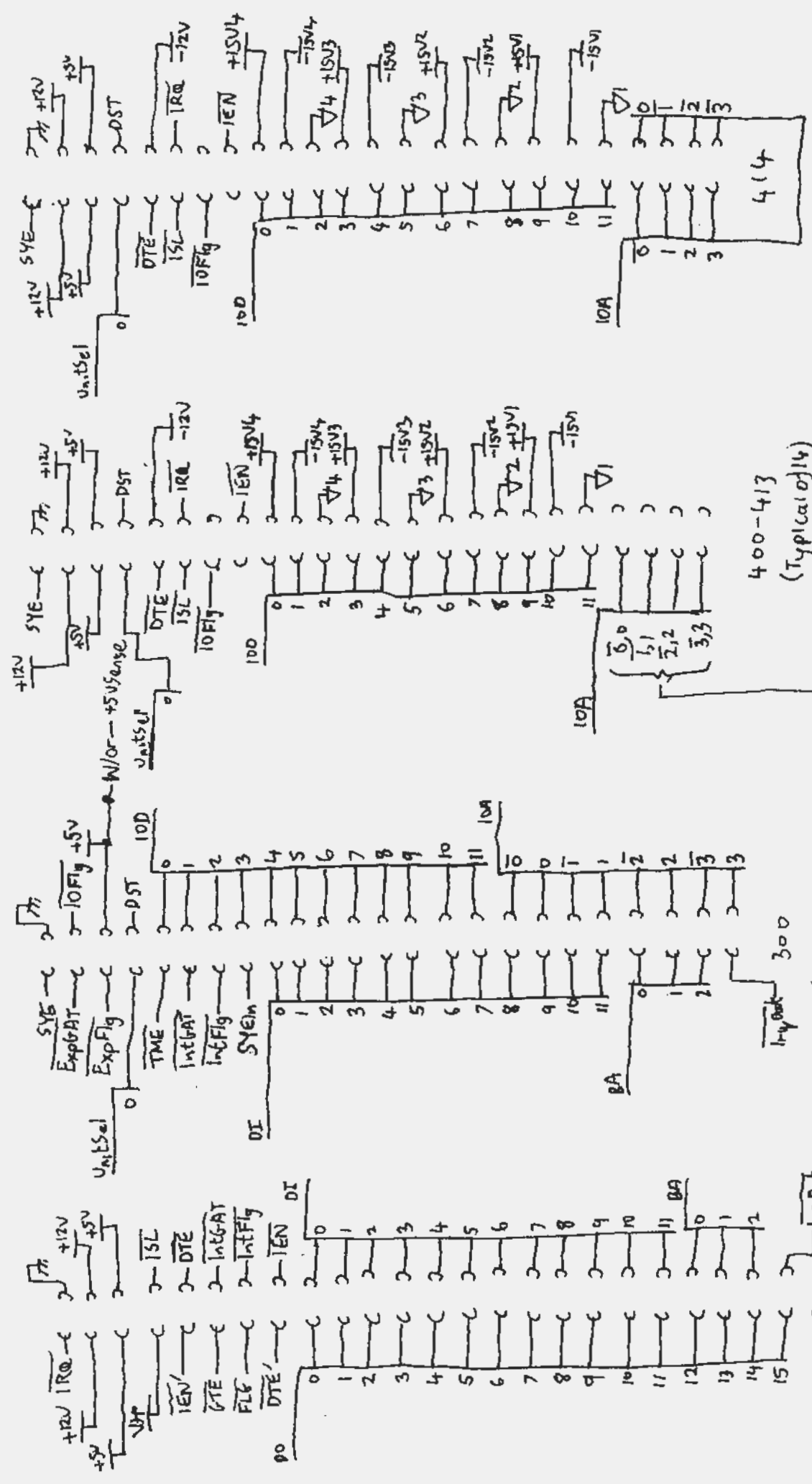




700
(Input Connector)

800
(Expansion Connector)

100
(Standard Input)

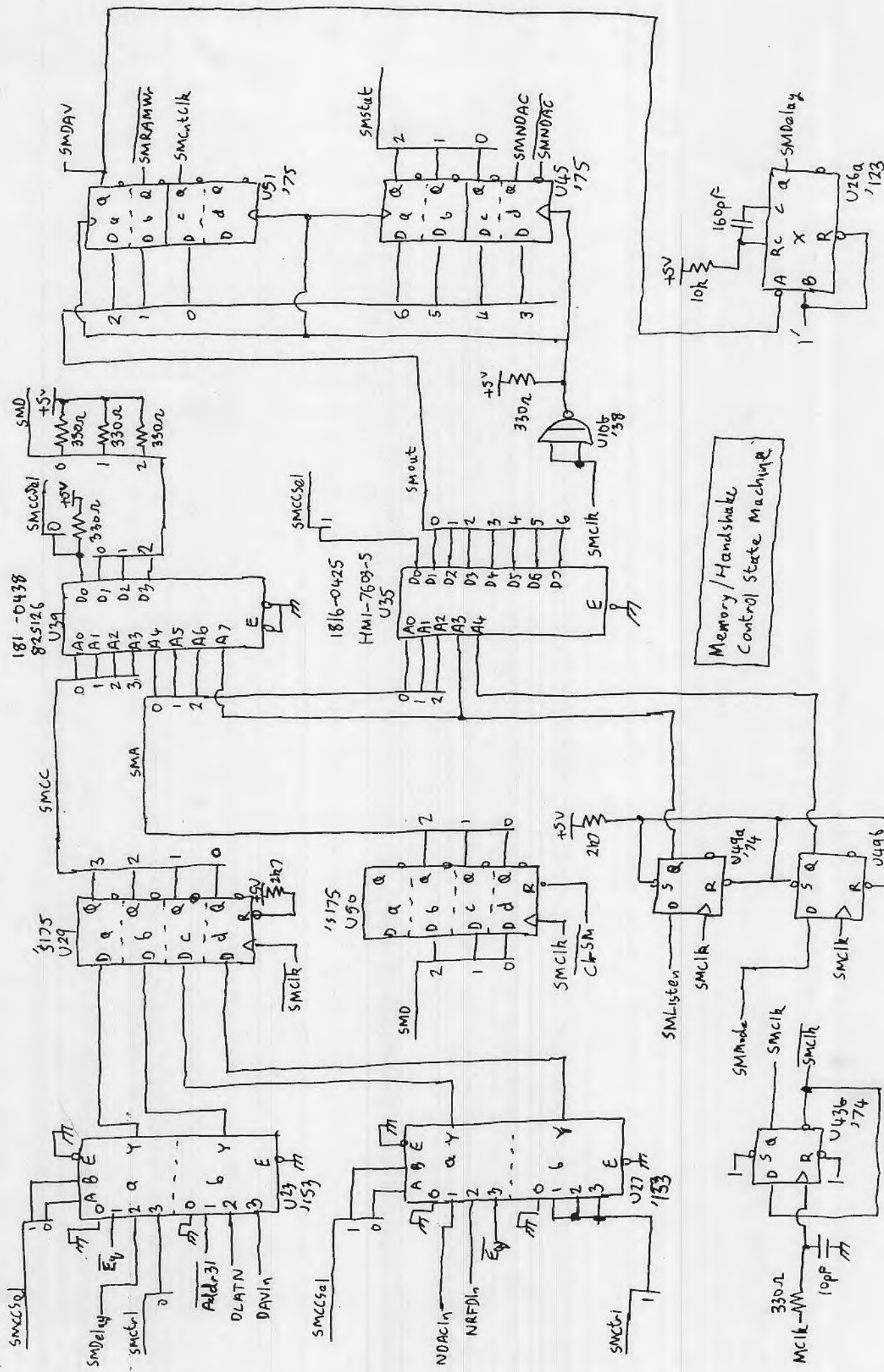


400-413
(Typical of 14)

PCB Address lines (1/0 PCBs)
wired so that all are
Logic 1 at given slot
when that slot is selected

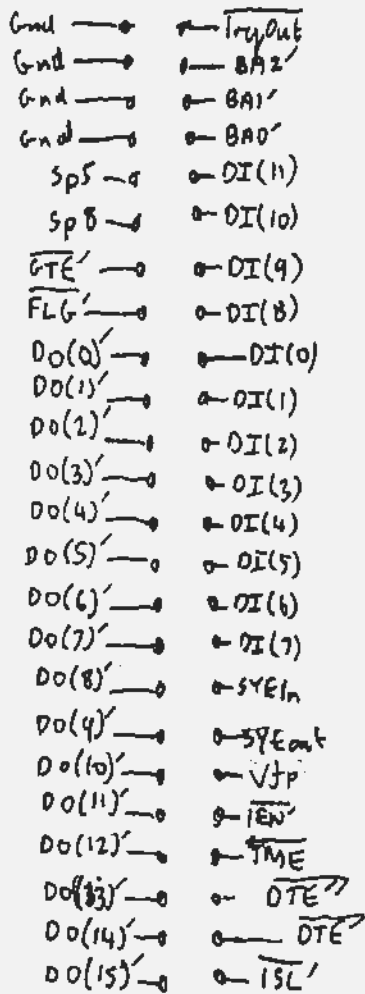
(Logic & Timing)

200
(Remote/Local)

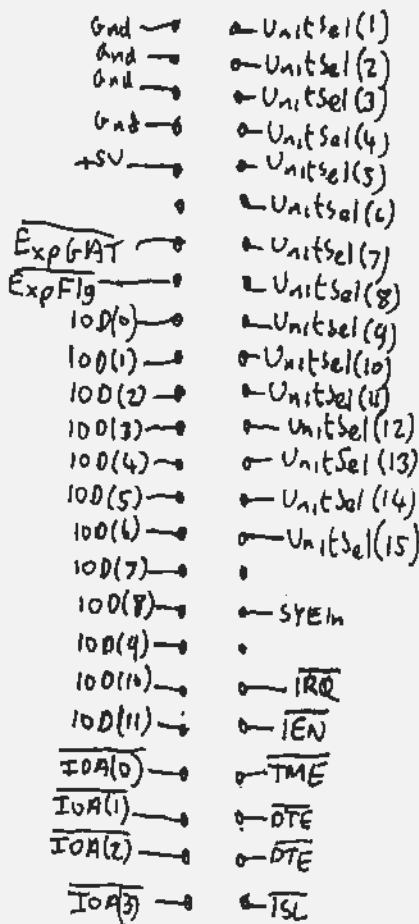


Memory/Handshake
Control State Machine

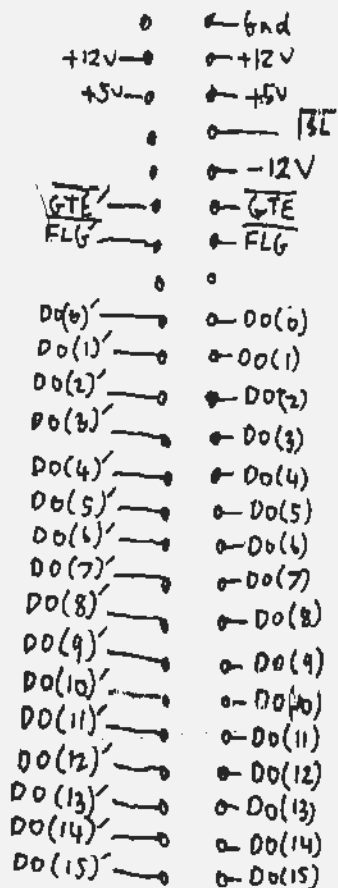
HP 6940B



700
Input Connector

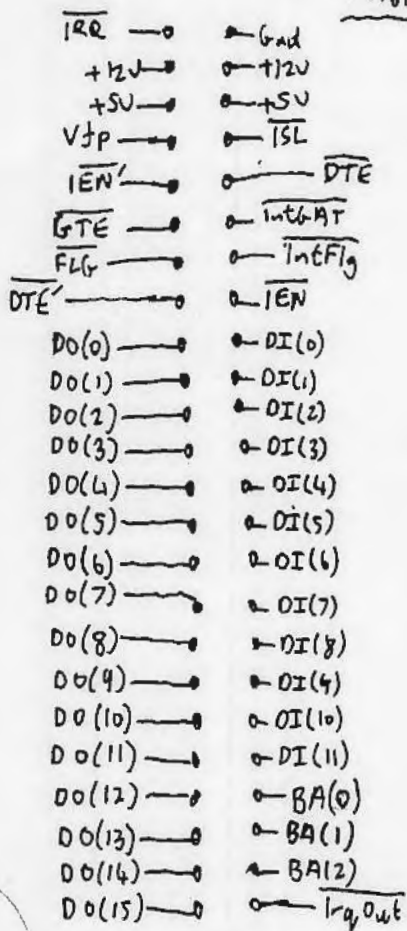


800
Expansion Connector

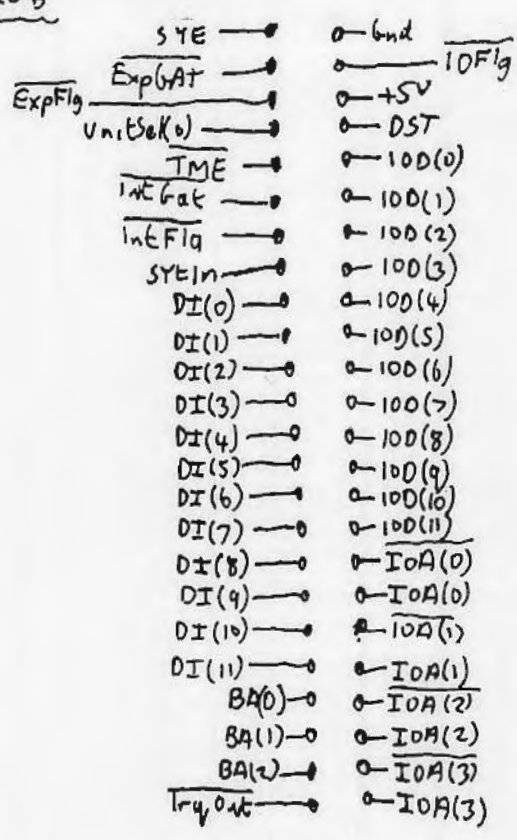


100
Standard Input

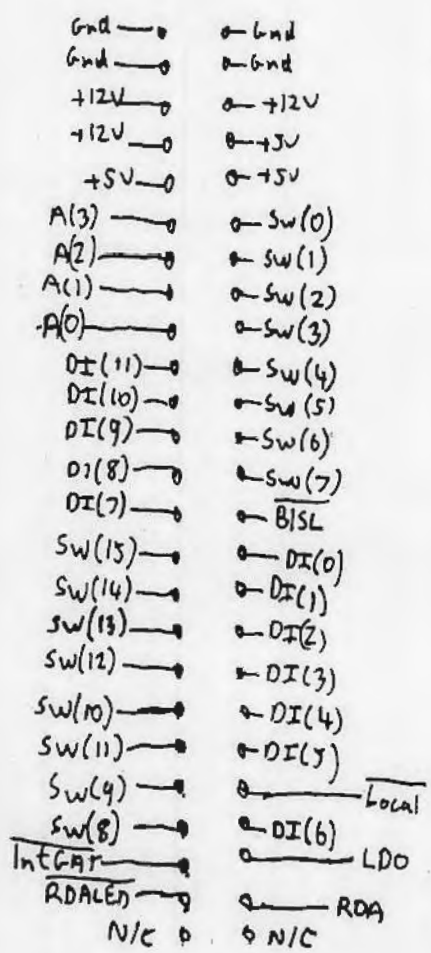
HP6440B



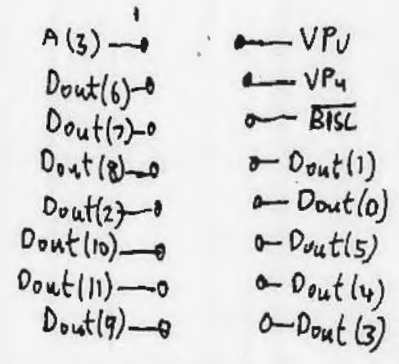
200
Remote/Local



300
Logic
& Timing

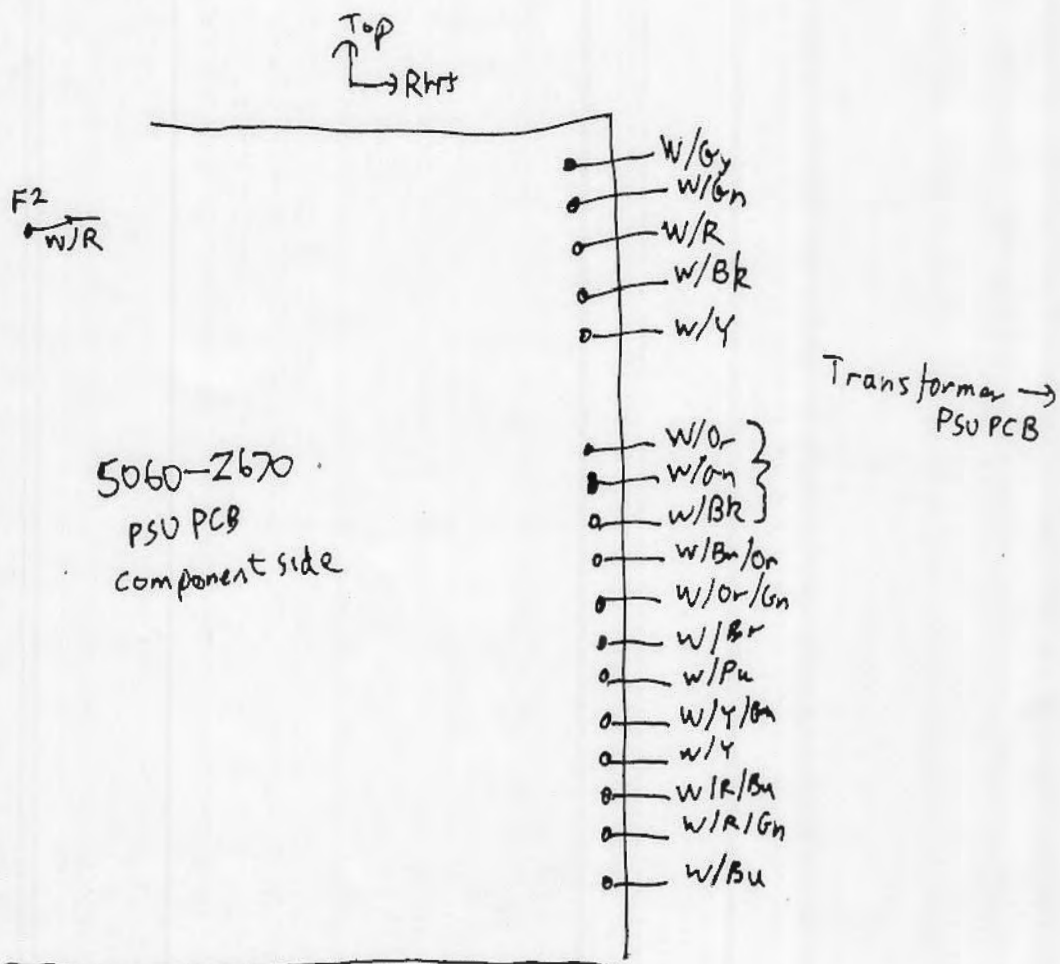
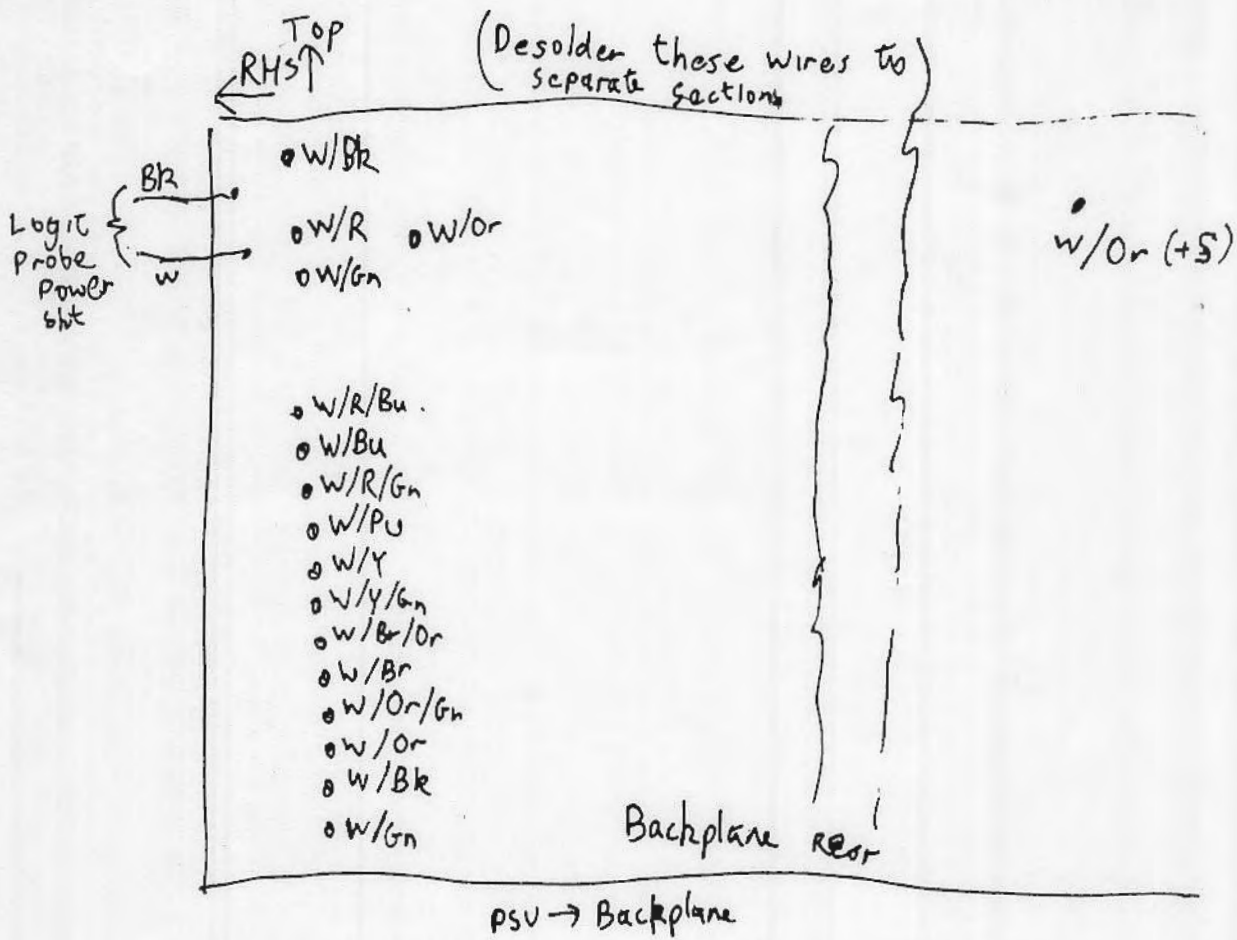


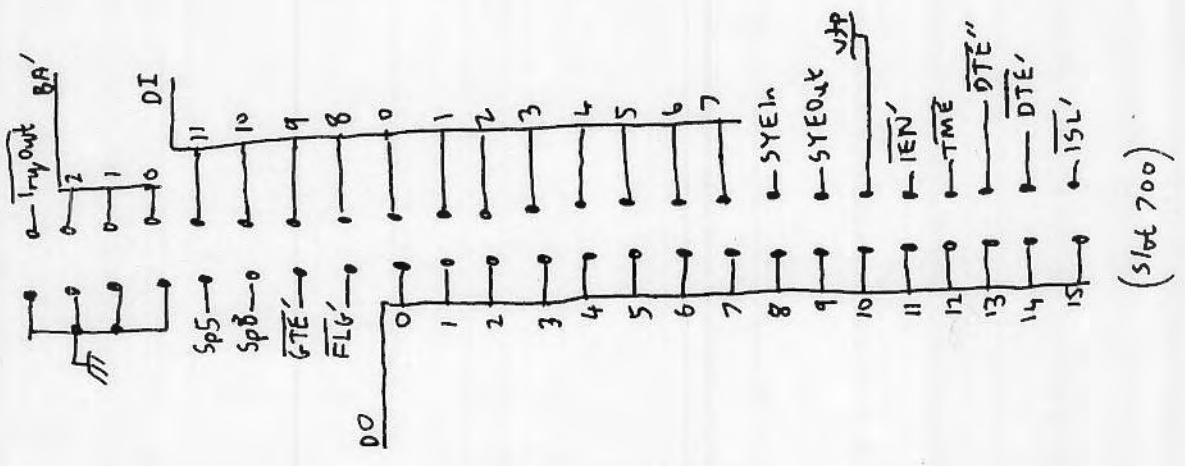
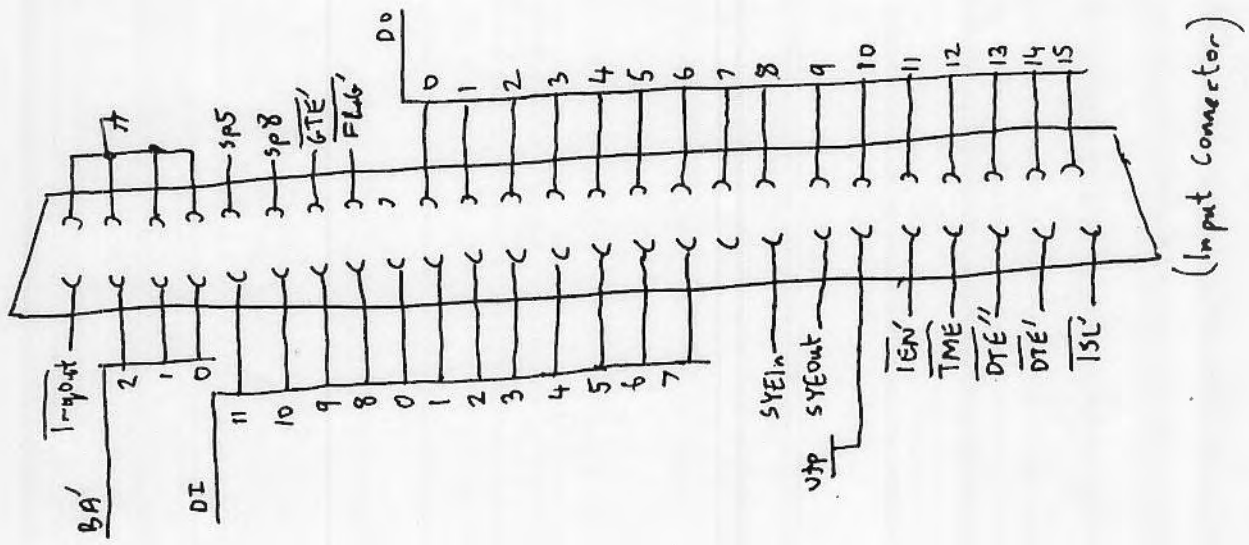
Frontpanel Cable



200-300
Interconnect Cable

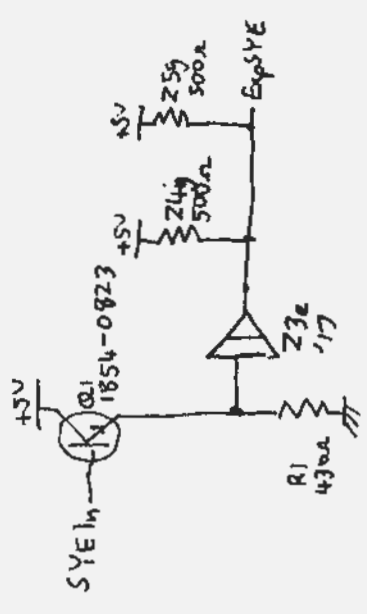
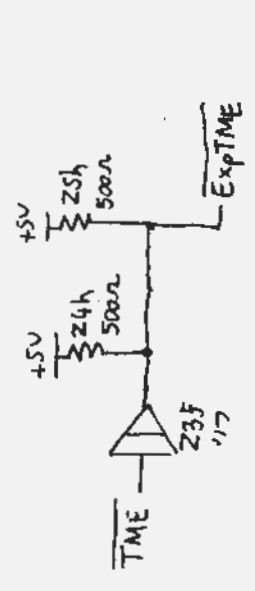
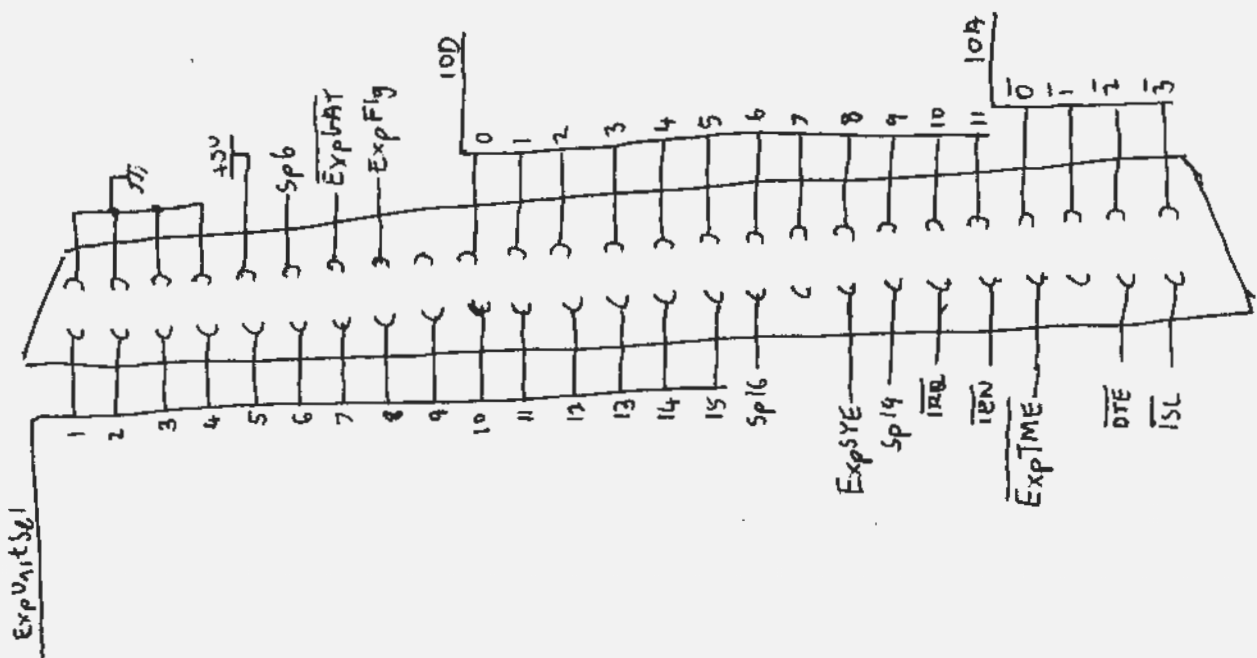
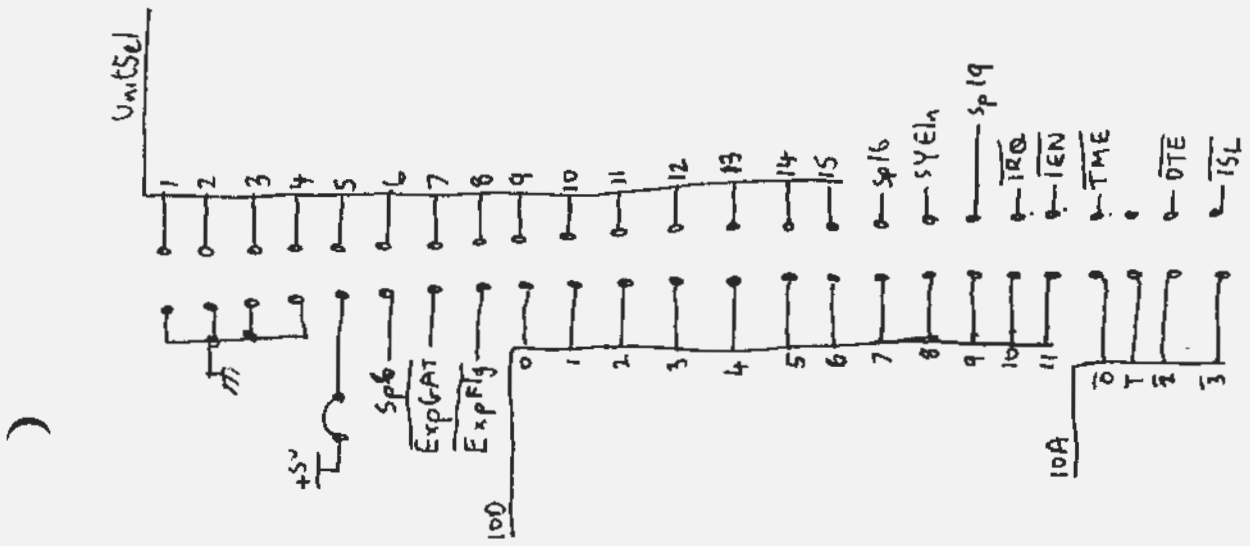
HP6940B Multiprogrammer



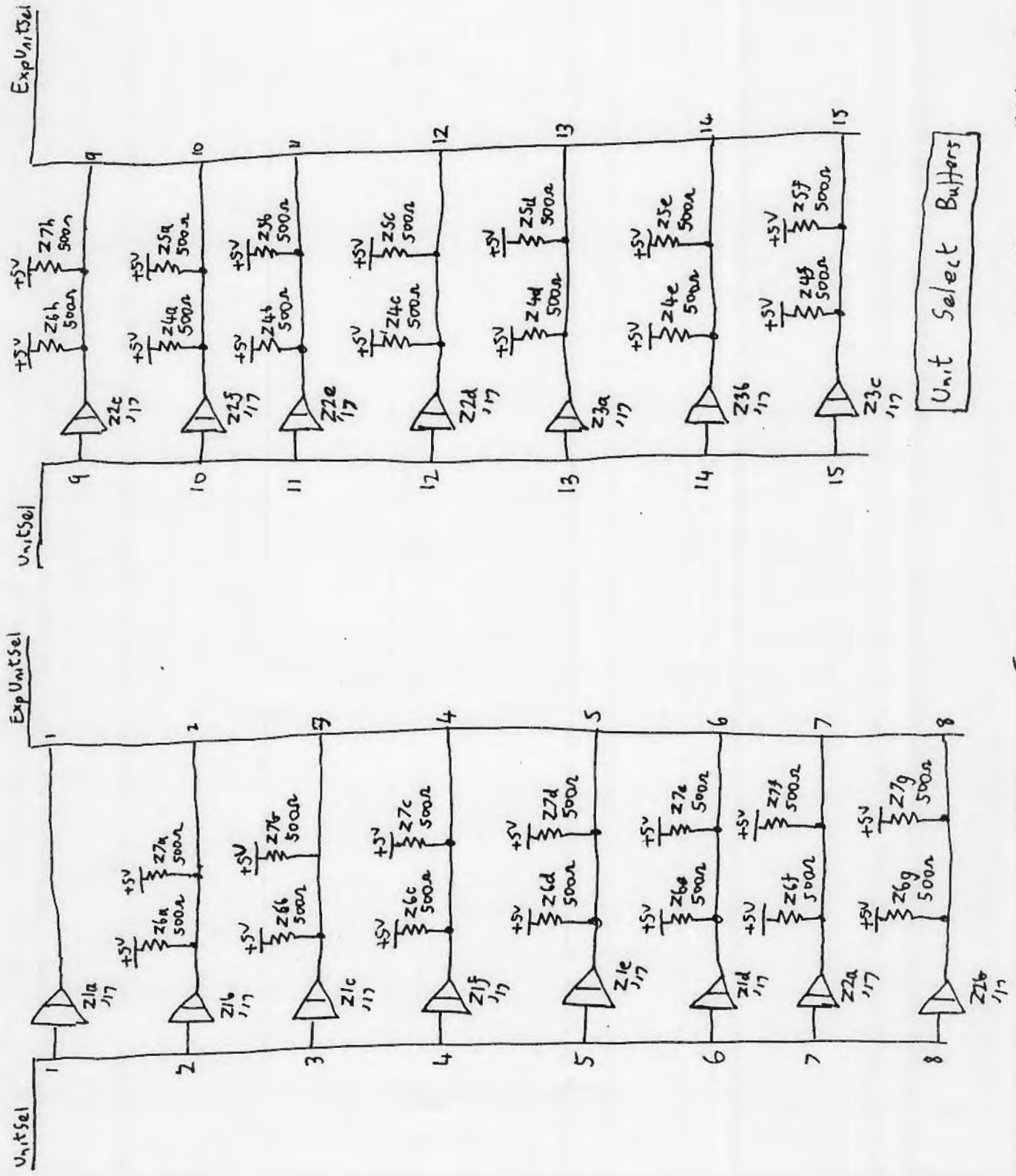


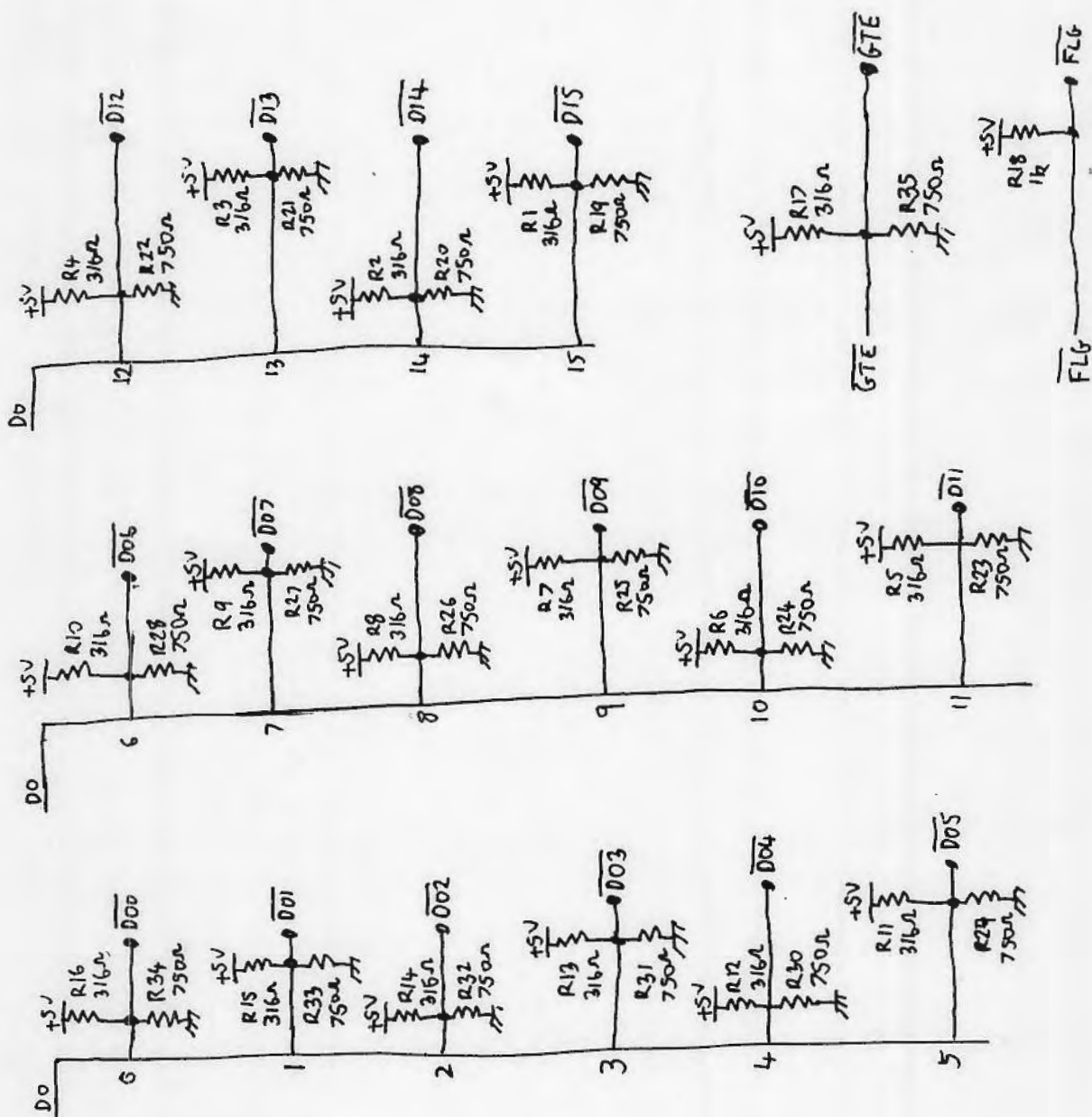
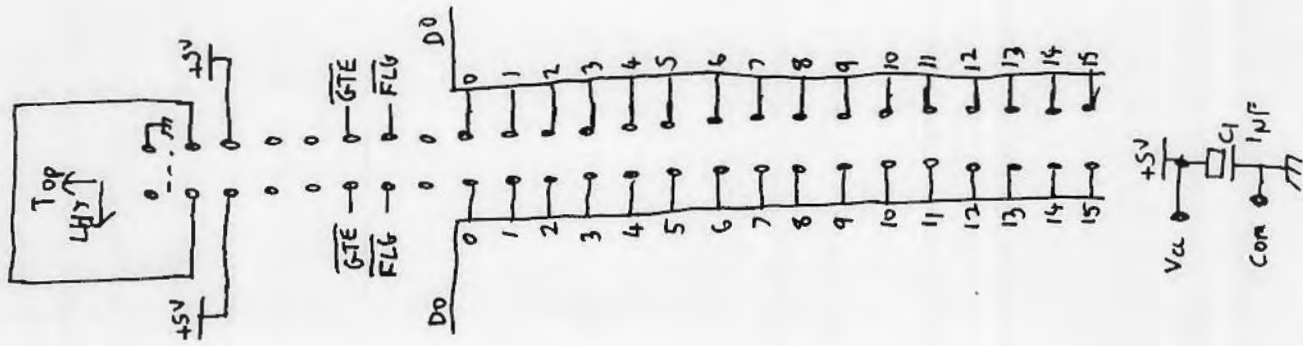
5060-6200

HP6940B Input Connector PCB



Control Buffer

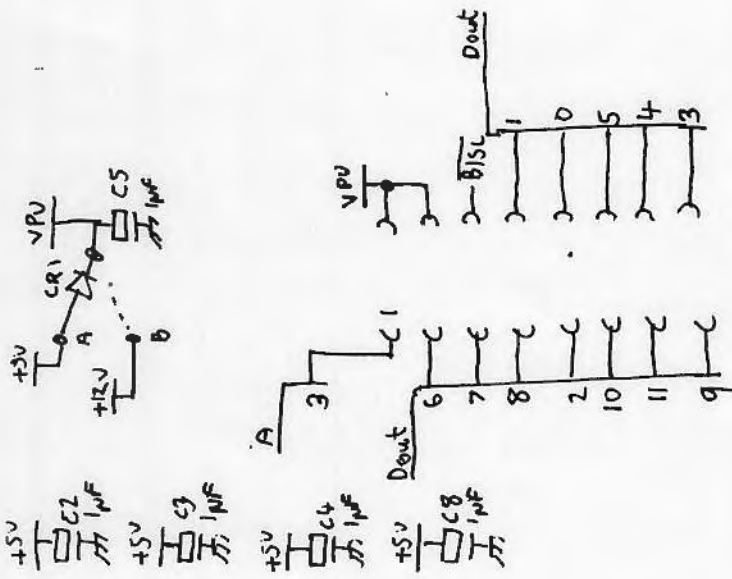
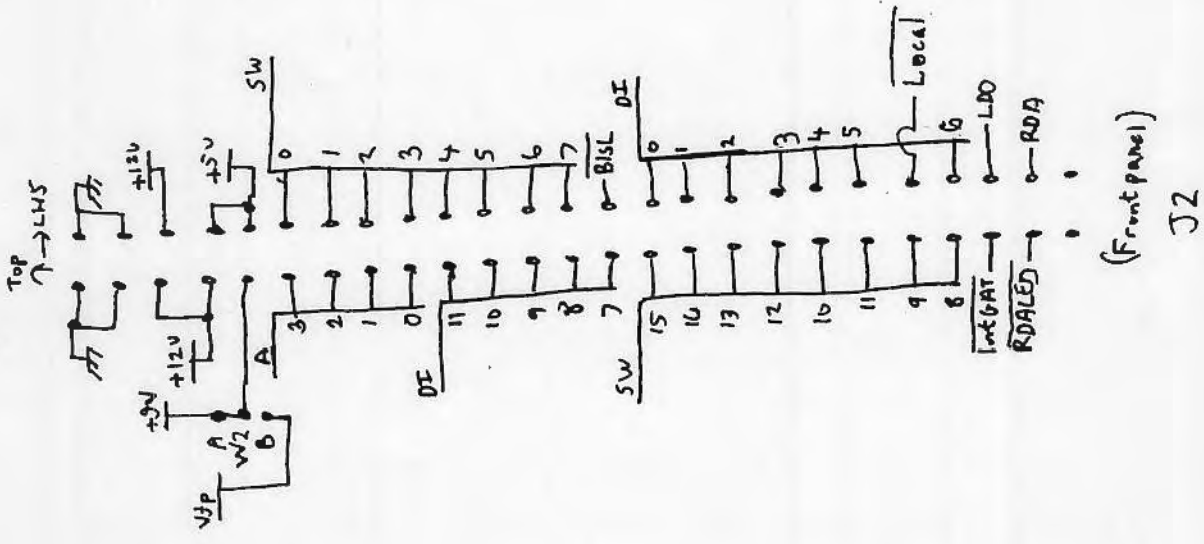
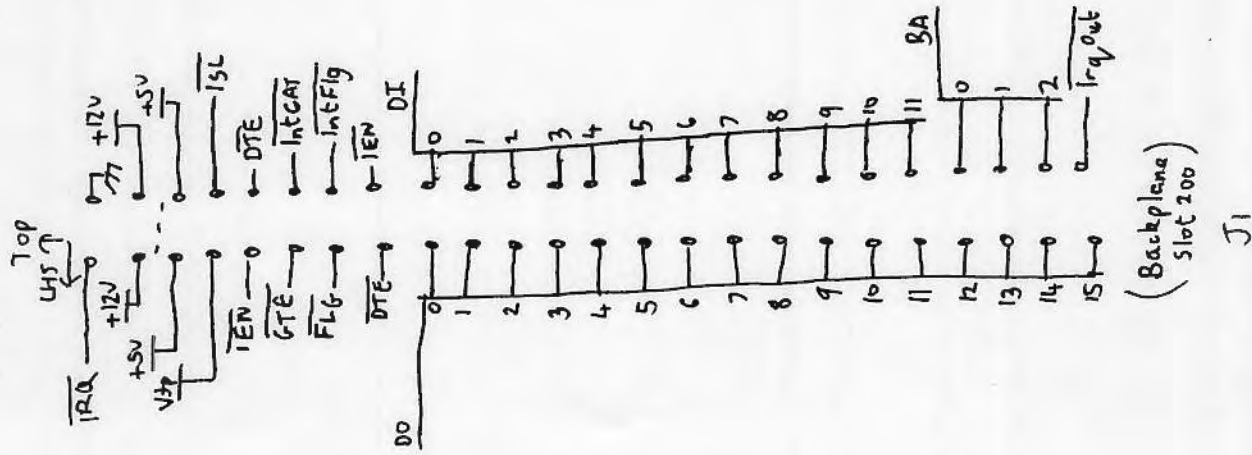




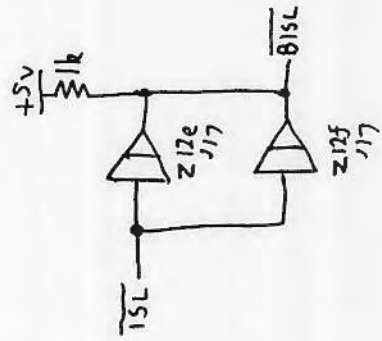
06940-60031

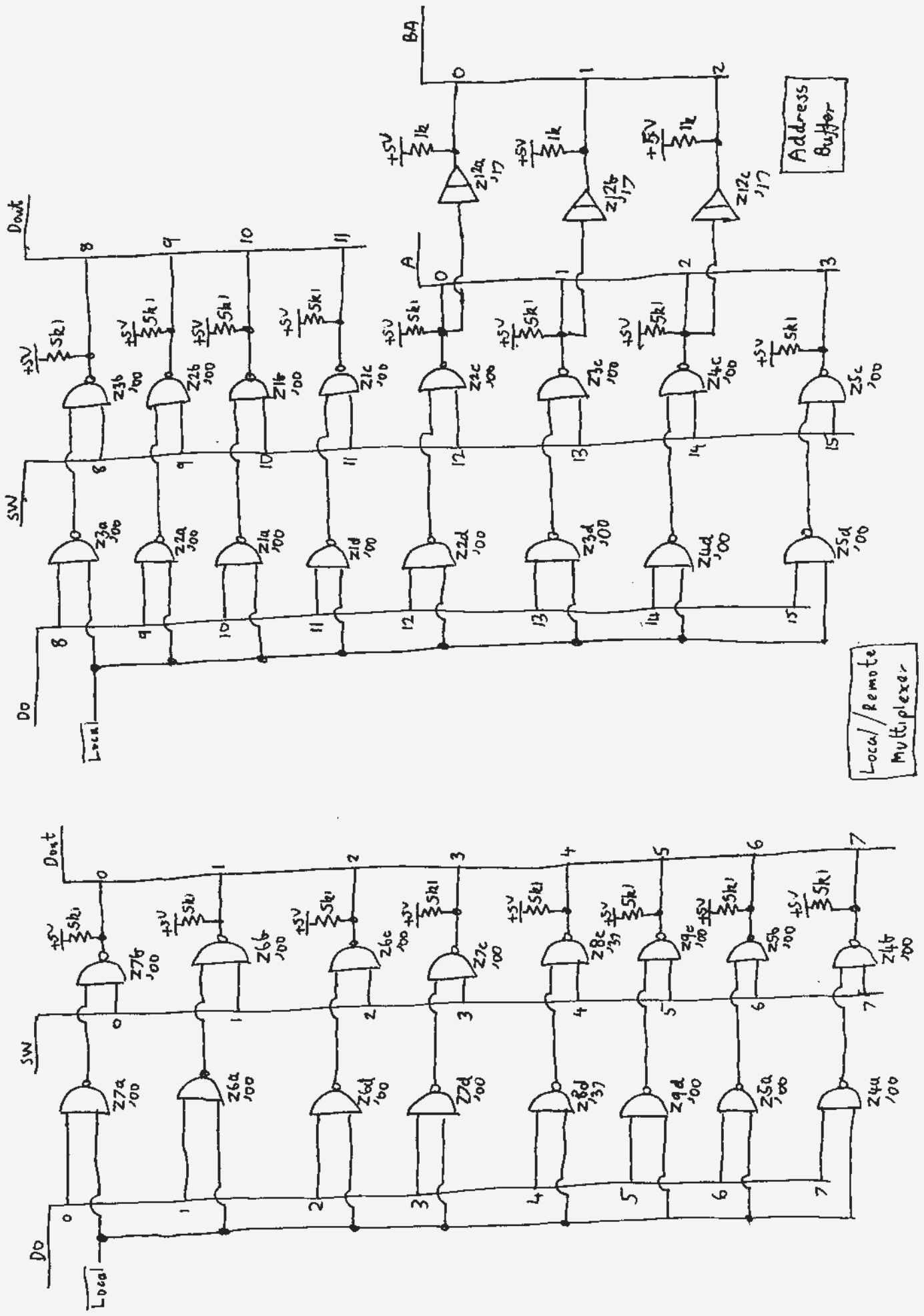
Standard Input PCB (Slot 100)

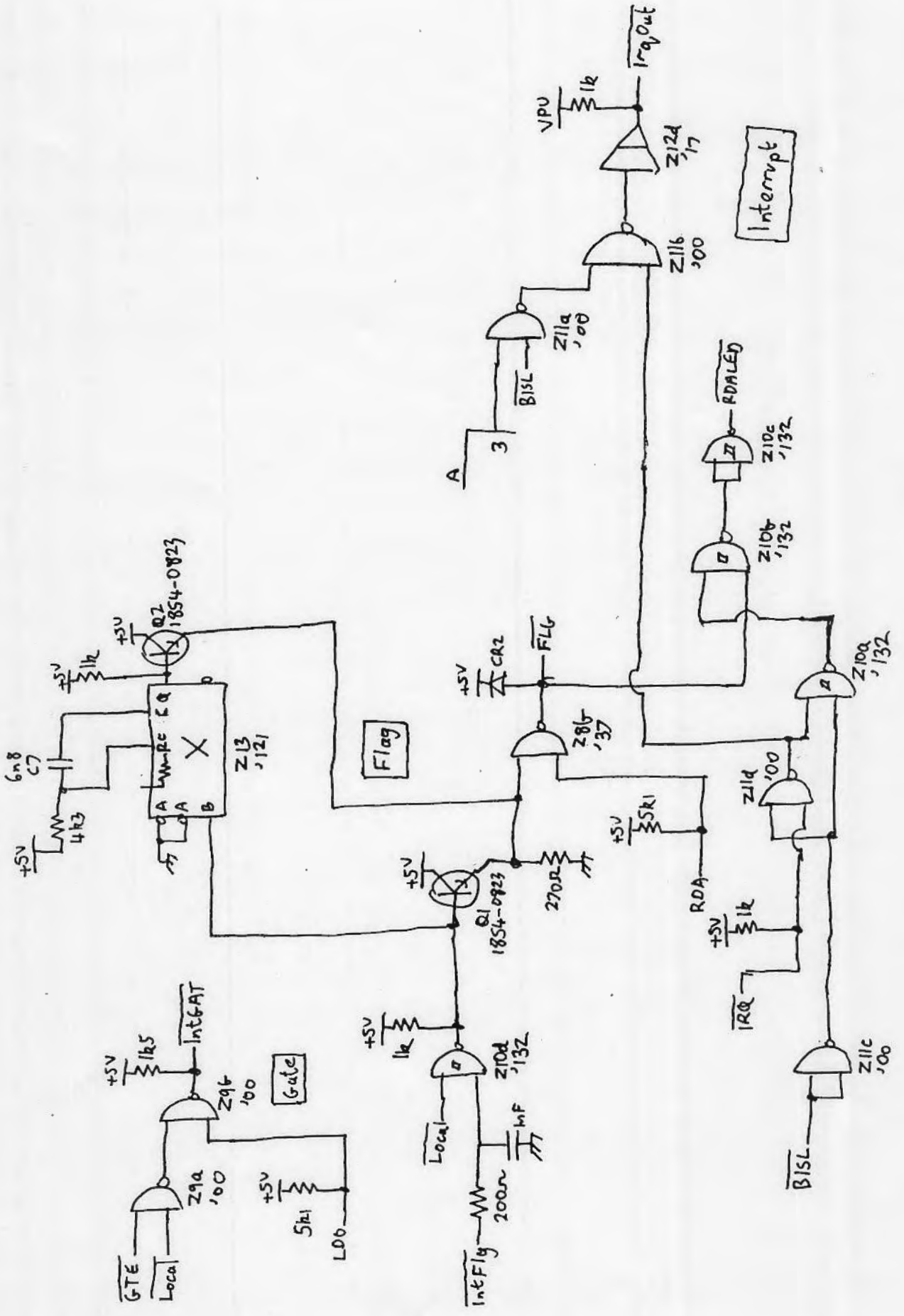
HP6940B

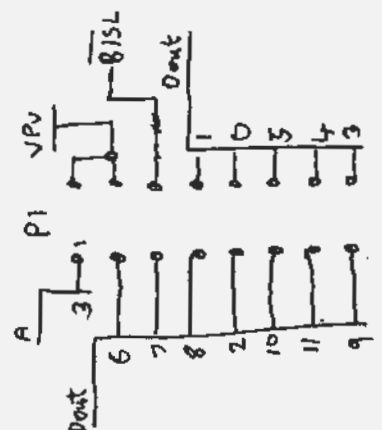
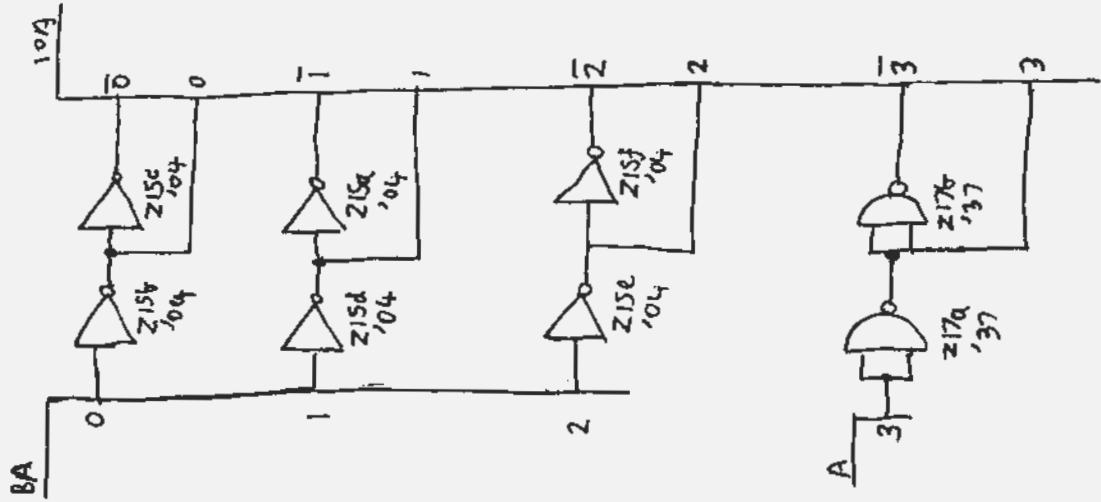


(Cable to Logic & Timing PCB)

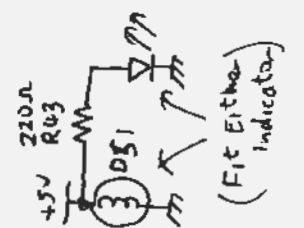
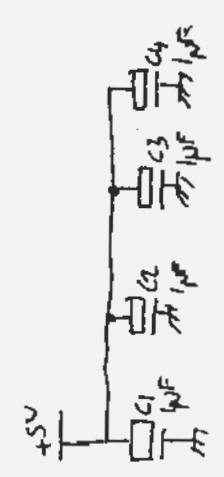
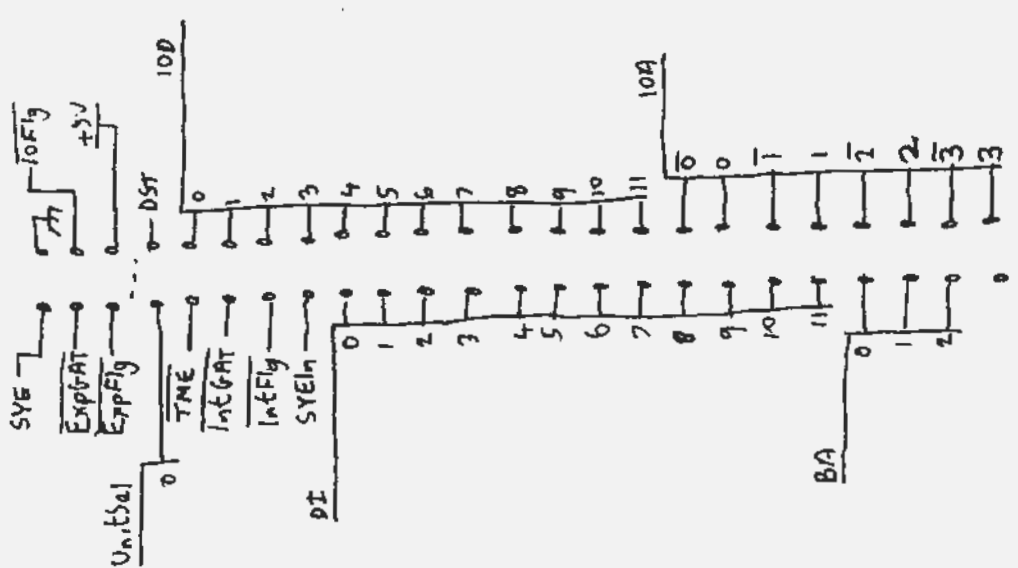






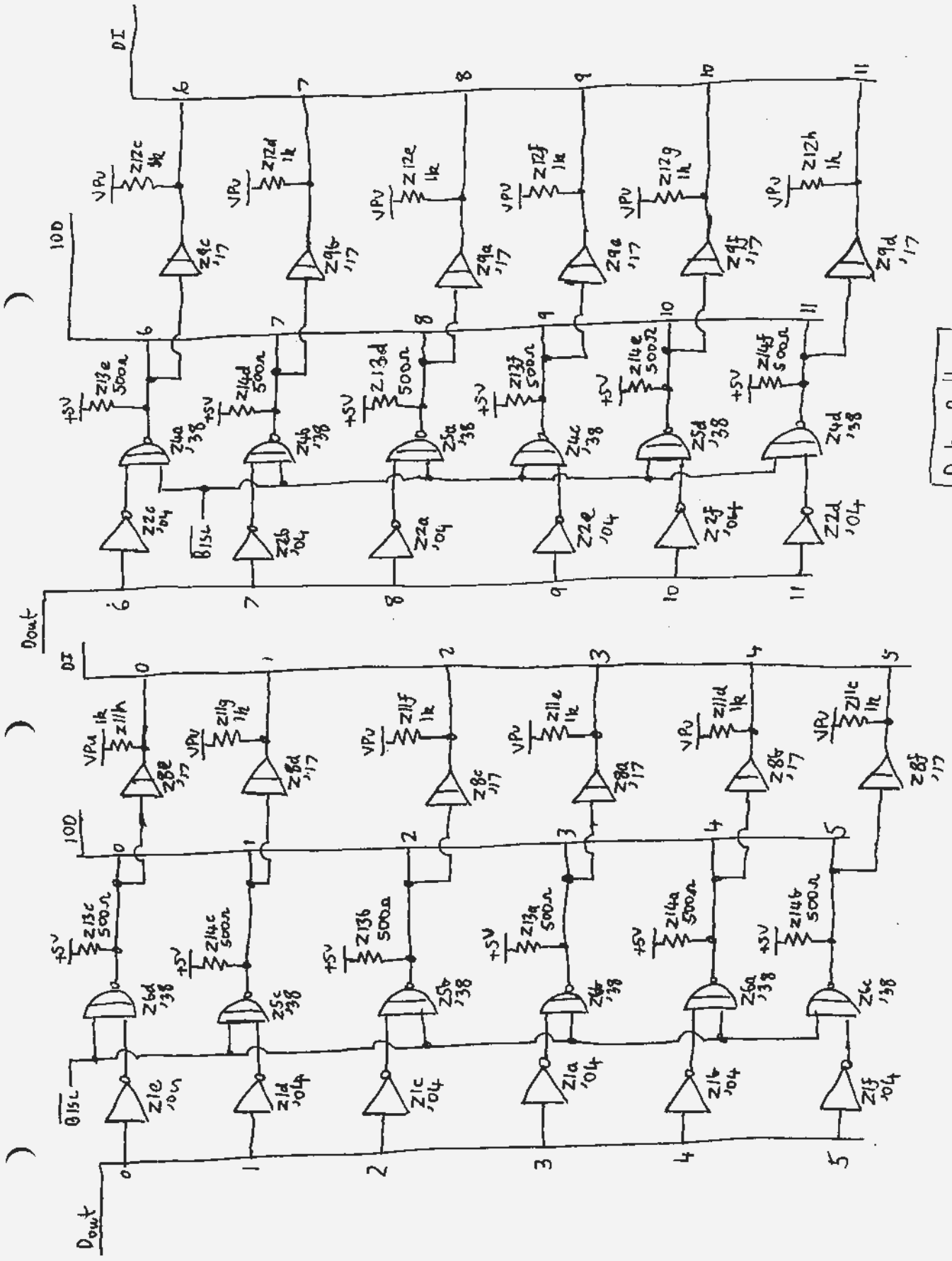


(To Remote/
Local PCB)

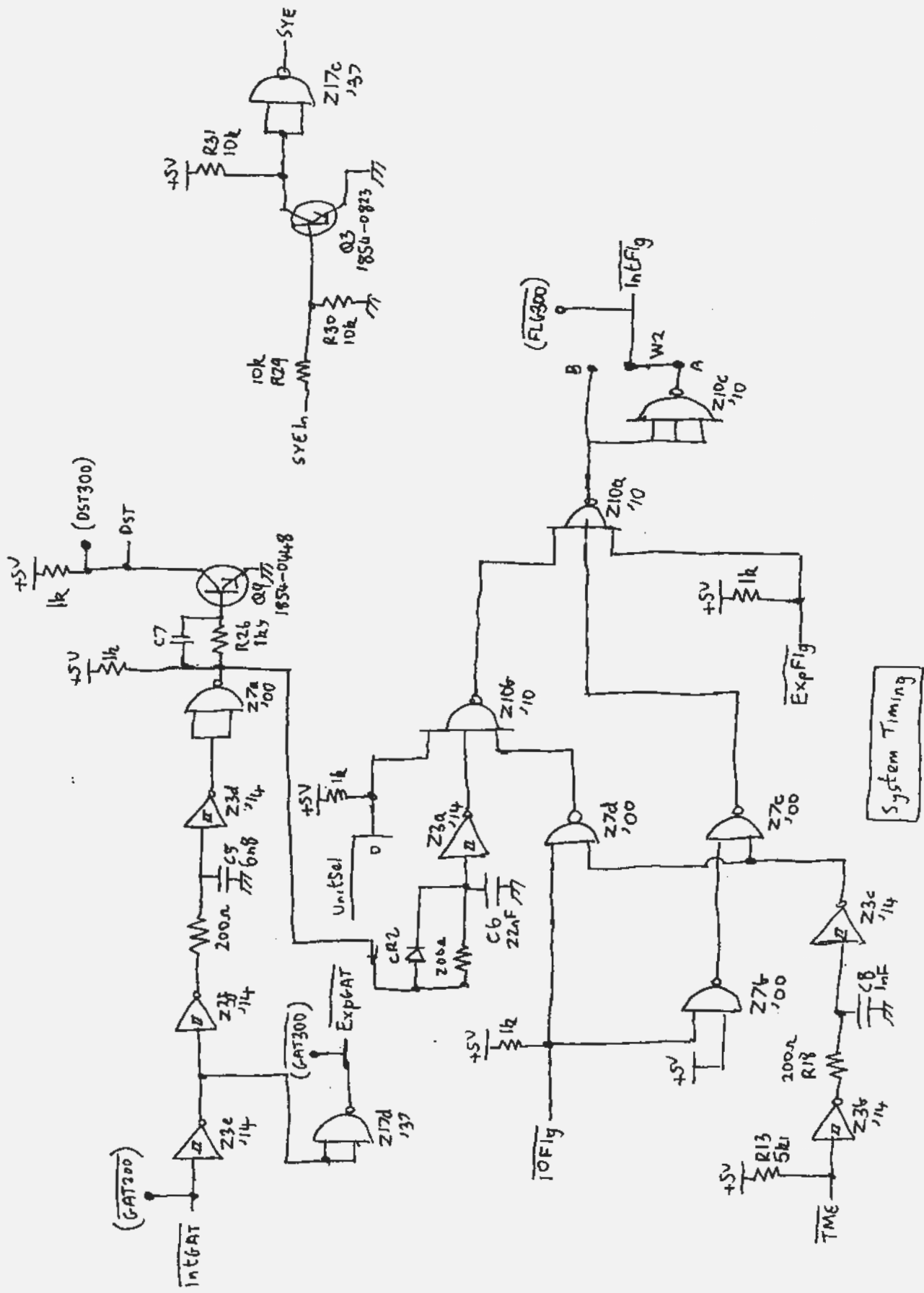


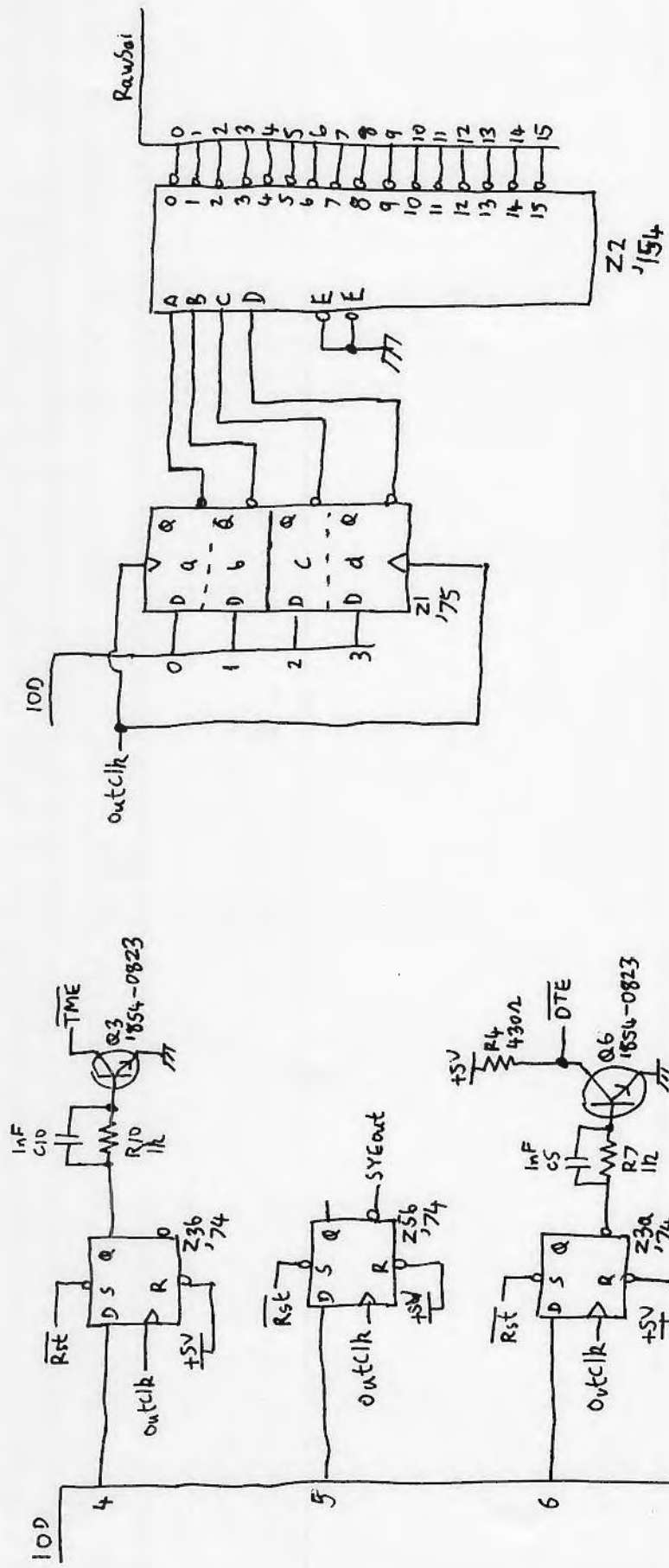
(Fit Either-
Indicator)

(COM)

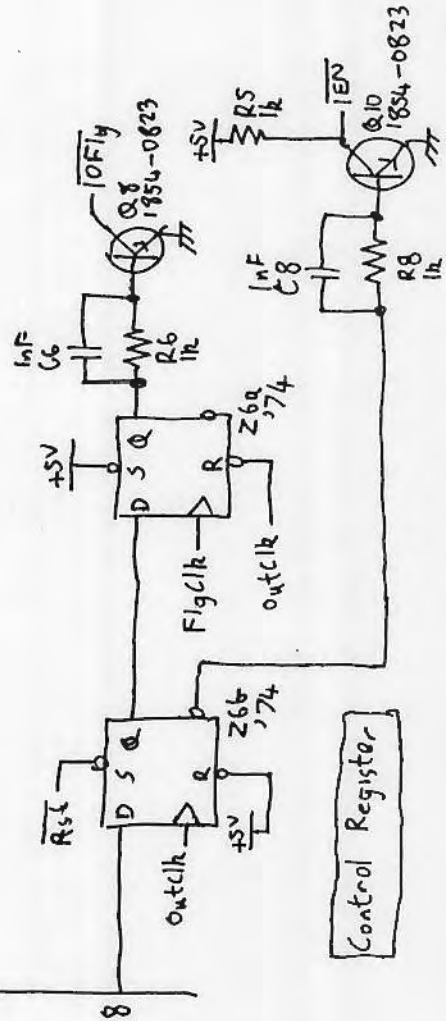


Data Buffers

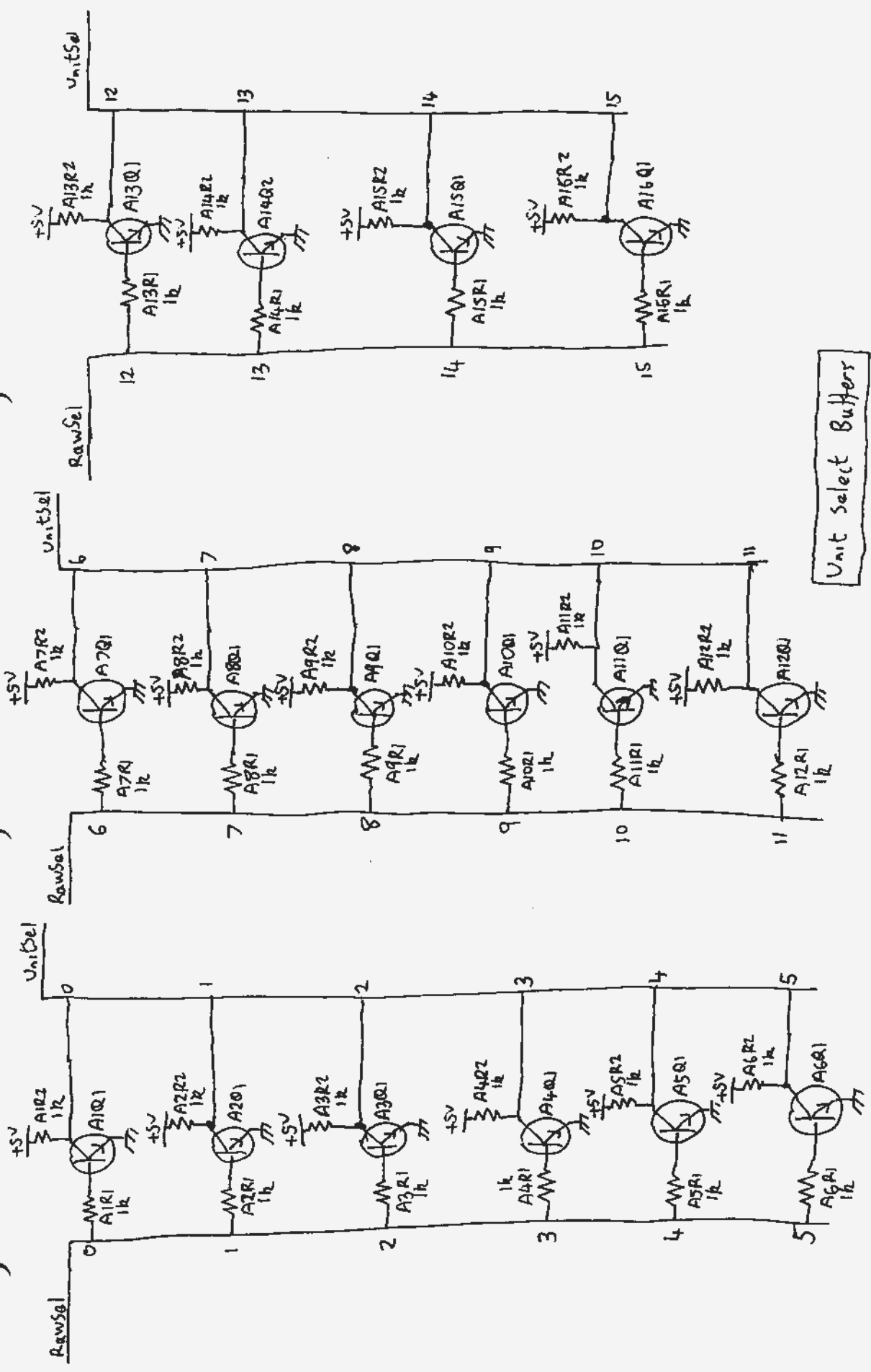




Unit Select Register

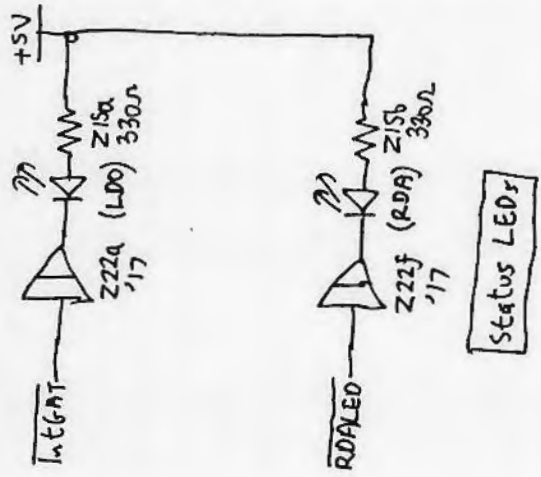
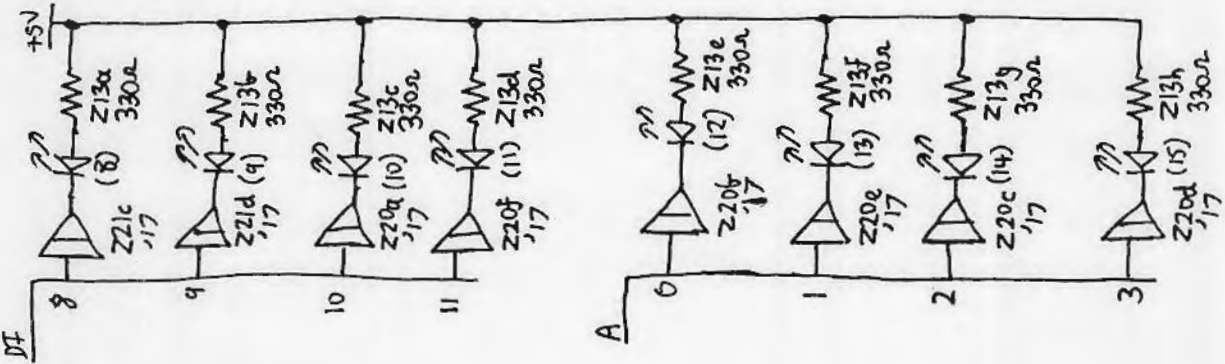
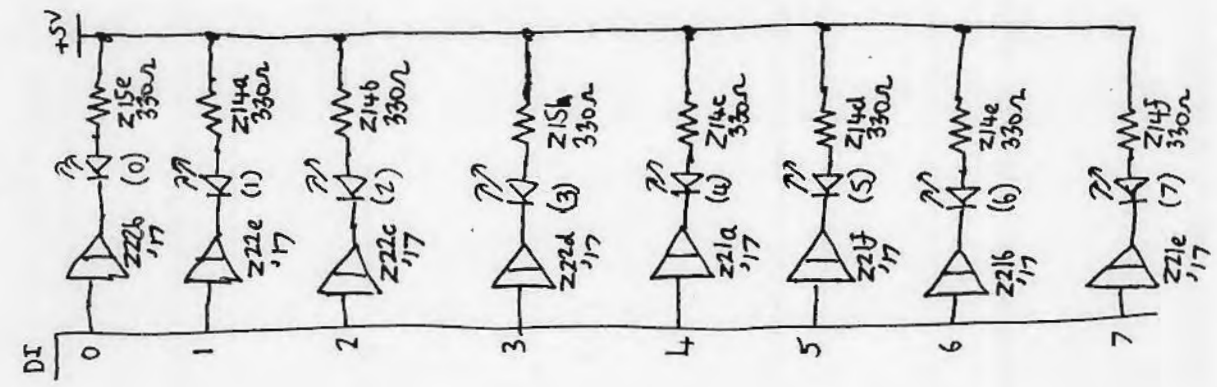
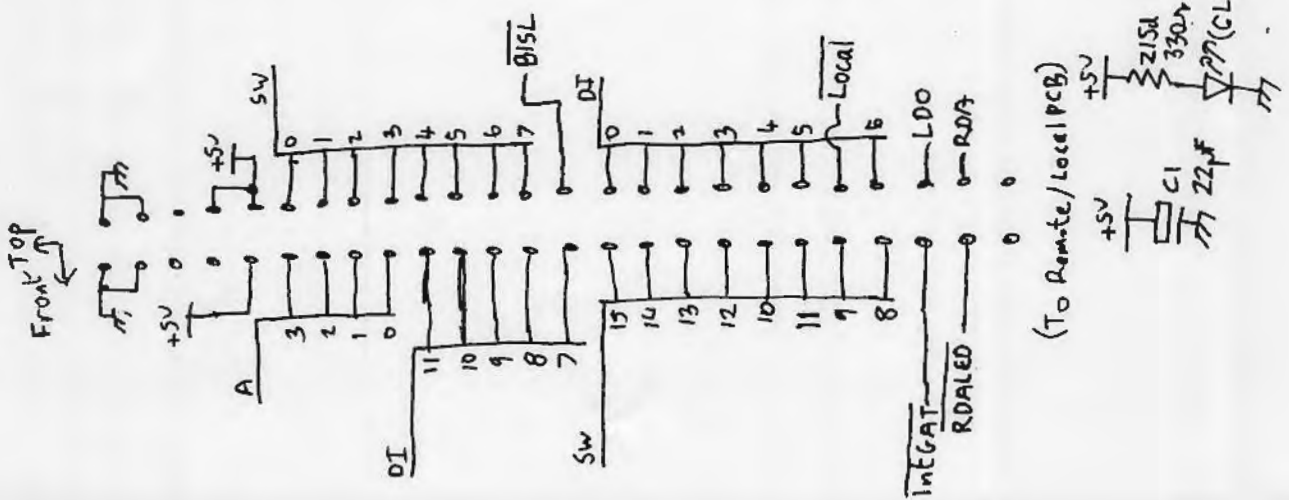


Control Register



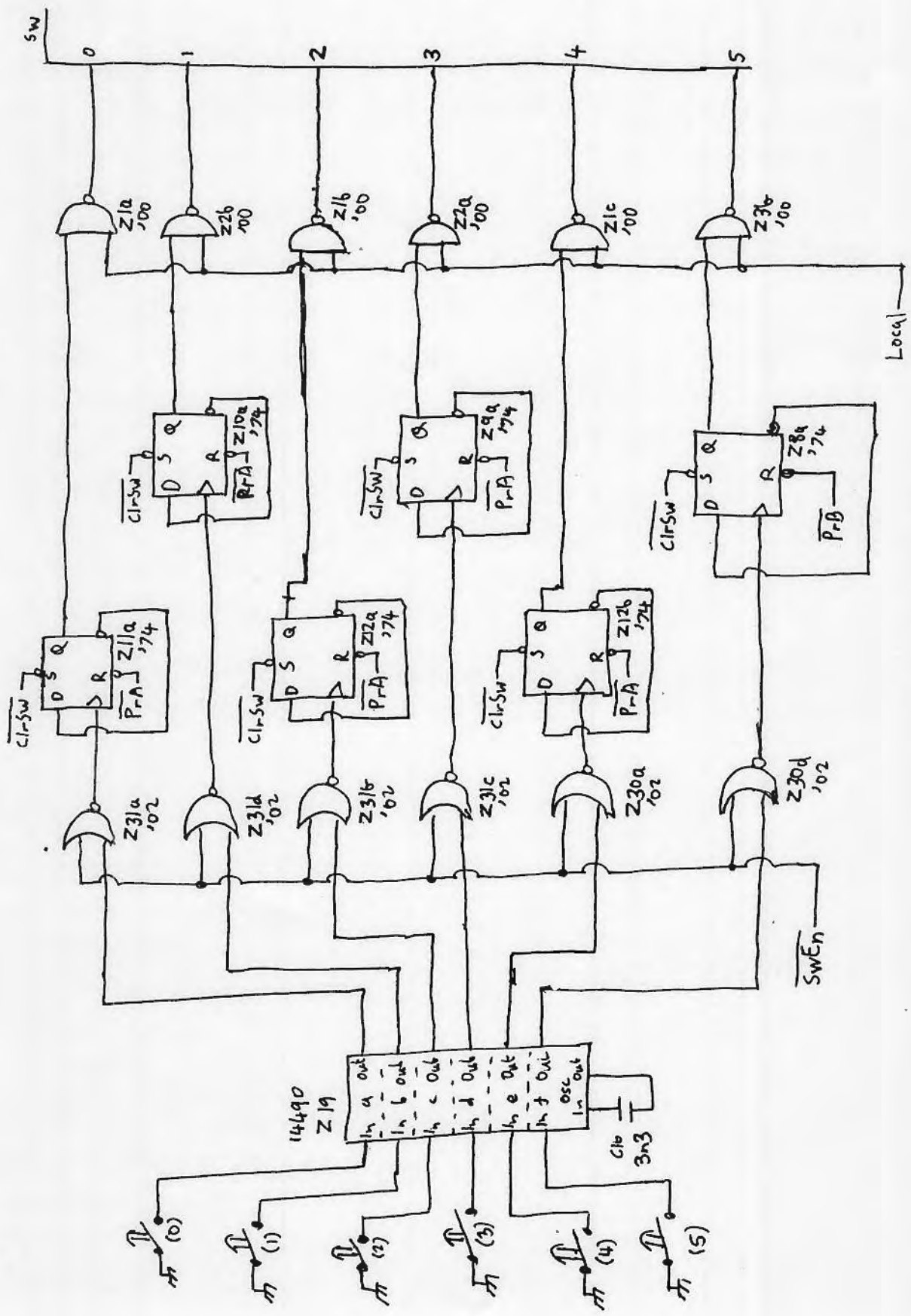
Unit select Buffers

(All Transistors 1854-0823)

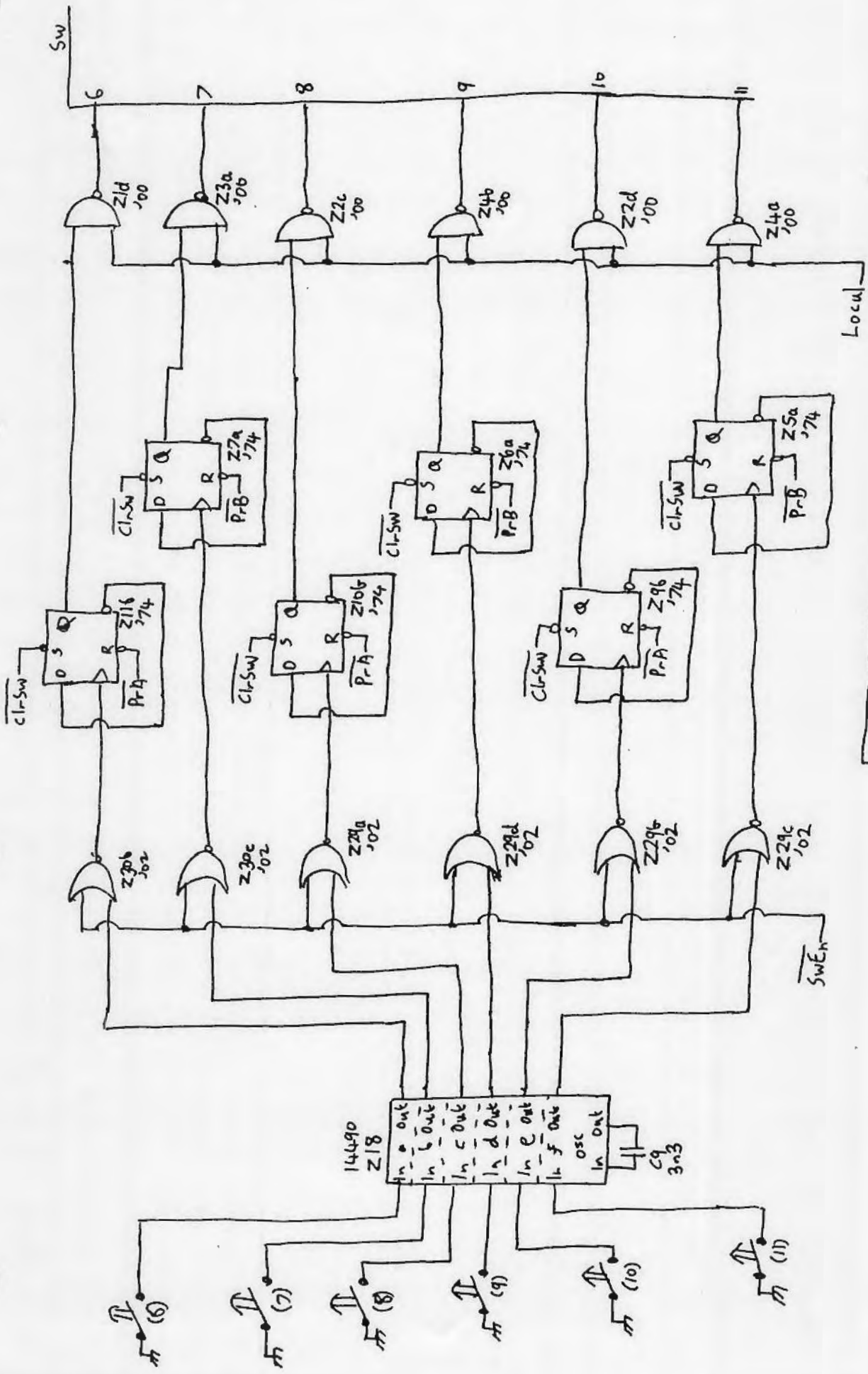


Address / Data LEDs

Status LEDs



Low Data Switches



High Data Switches

)))))

